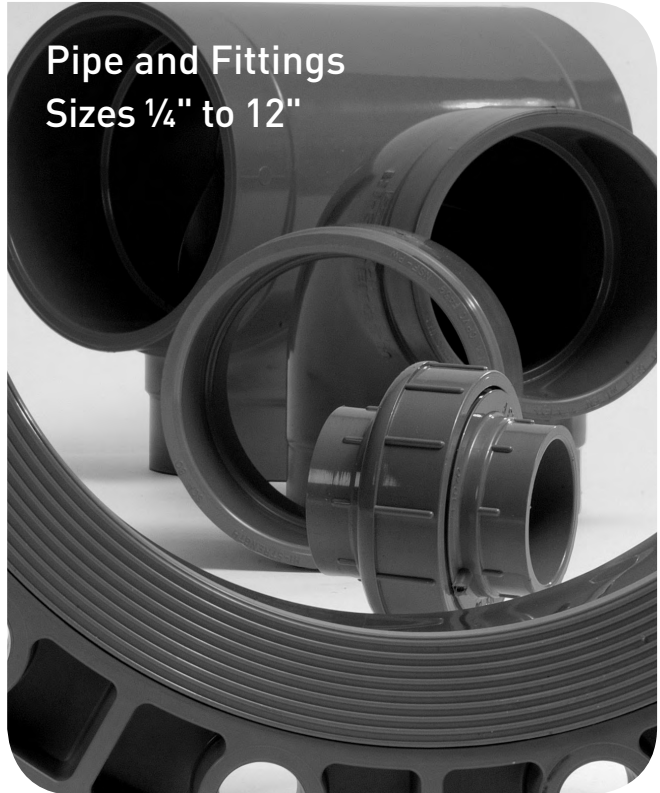


**Section 2**

**Schedule 80 CPVC  
Piping System**

Effective September 27, 2010

**Pipe and Fittings  
Sizes 1/4" to 12"**



## Glossary

<b>FPT</b>	= Female Pipe Thread
<b>MPT</b>	= Male Pipe Thread
<b>S</b>	= Tapered Socket
<b>SPG</b>	= Spigot End (same dimension as pipe outside diameter)
<b>*</b>	= Non-Returnable / Non-cancellable
<b>^</b>	= 40% Restocking Fee
<b>HS</b>	= High Strength Design
<b>SL</b>	= Streamline Design
<b>BUSH</b>	= Assembled Fitting from Molded Components
<b>FAB</b>	= Fabricated Fitting





<b>Product Line</b>	<b>Descriptions</b>	<b>Discount</b>
70	CPVC Pressure Pipe-20ft. Lengths Plain End	_____
25	CPVC Pressure Fittings - Molded	_____
34	CPVC Pressure Expansion Joint	_____
33	CPVC Pressure Metal Insert Fittings	_____
02	CPVC Pressure LD Fittings - Molded	_____
06	CPVC Pressure LD Fittings - Fabricated	_____

The technical information given in this publication implies no warranty of any kind and is subject to change without notice. Please consult our Terms and Conditions of Sale.

For complete technical information, please consult the GF Piping Systems' Technical Manual available online at [www.gfpiping.com](http://www.gfpiping.com) or by calling (800) 854-4090.

**For more information about any of our product lines, please call (800) 854-4090.**

# Schedule 80 CPVC

		Page
	Schedule 80 CPVC Pressure Pipe	2.5
	Schedule 80 CPVC Pressure Fittings	2.6
	Schedule 80 CPVC Metal Transition Fittings	2.22
	Schedule 80 CPVC Expansion Joints	2.24

# Specifications, Standards and Tolerances

## Specifications and Standards

NSF/ANSI Standard 14

NSF/ANSI Standard 61

ASTM D 1784 : Material CPVC Type IV, Grade I Gray (cell classification 24448) – Pipe  
Material CPVC Type IV, Grade I Gray (cell classification 23447) – Fittings

ASTM F 441 : CPVC Schedule 80 Pipe

ASTM F 439 : CPVC Schedule 80 Socket & Threaded Fittings

ASTM F 437 : CPVC Schedule 80 Threaded Fittings

ASTM F 1970 : CPVC Schedule 80 Unions

ANSI B16.5 : Flange Bolt Hole Patterns

ANSI B1.20.1 : CPVC Schedule 80 NPT Threads

CSA B137.6 : CPVC Schedule 80 Pipe (1¼"–2½" only)

## Molded Dimension Tolerances

A Piston Position; Expansion Joints :  $\pm 0.03$

D Outside Diameter :  $\pm 0.06$

G, G1 Intersections of centerlines to bottom of socket; 90° Ells, Tees : up to 4"  $\pm 0.03$ ; 6" and above  $\pm 0.06$

GJ, GN Intersections of centerlines to bottom of socket; 45° Wyes : up to 4"  $\pm 0.03$ ; 6" and above  $\pm 0.06$

H, HJ, HN Intersections of centerlines to face of fitting; 90° Ells, 45° Ells, Tees, 45° Wyes : up to 4"  $\pm 0.03$ ; 6" and above  $\pm 0.06$

HL Socket Bottom to Face of Fitting : up to 4"  $\pm 0.03$ ; 6" and above  $\pm 0.06$

J Intersections of centerlines to bottom of socket; 45° & 30° Ells : up to 4"  $\pm 0.03$ ; 6" and above  $\pm 0.06$

L Overall Length of fitting :  $\pm 0.06$

N Socket Bottom to Socket Bottom; Couplings, Unions :  $\pm 0.06$

N1 Socket Bottom to Face of Flange :  $\pm 0.06$

R Thickness on Plugs, Flanges :  $\pm 0.03$

T, T1 Effective Thread Length : Reference Only

W Height of Cap :  $\pm 0.06$

## Fabricated Dimension Tolerances

D Outside Diameter :  $\pm 0.50$

E Drive Pin Diameter :  $\pm 0.50$

G, G1 Intersections of centerlines to bottom of socket; 90° Ells, Tees, Crosses :  $\pm 0.25$

GJ, GN Intersections of centerlines to bottom of socket; 45° Wyes :  $\pm 0.25$

H, HJ, HN Intersections of centerlines to face of fitting; 90° Ells, 45° Ells, Tees, 45° Wyes, True Wyes :  $\pm 0.50$

HL Socket Bottom to Face of Fitting :  $\pm 0.25$

J Intersections of centerlines to bottom of socket; 11¼°, 15°, 30°, 22½°, 45° Ells, True Wyes :  $\pm 0.25$

L Overall Length of fitting :  $\pm 0.50$

N Socket Bottom to Socket Bottom; Couplings :  $\pm 0.50$

N1 Socket Bottom to Face of Flange :  $\pm 0.50$

R Thickness on Plugs, Flanges :  $\pm 0.25$

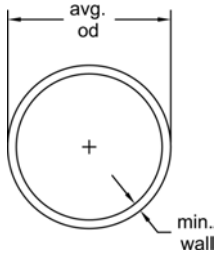
T, T1 Effective Thread Length : Reference Only

W Height of Cap :  $\pm 0.25$

# Schedule 80 CPVC

## Schedule 80 CPVC Pressure Pipe

### CPVC80 (Cell Class 24448) - 20 ft. lengths



Size [inch]	Plain End (P/L 70) Part No.	USD	Lift Qty [ft]	Average O.D. [inch]	min. wall [inch]
1/2	C8008-005AB *	Call	5600	0.840	0.147
3/4	C8008-007AB *	Call	5000	1.050	0.154
1	C8008-010AB *	Call	2360	1.315	0.179
1 1/4	C8008-012AB *	Call	1960	1.660	0.191
1 1/2	C8008-015AB *	Call	1800	1.900	0.200
2	C8008-020AB *	Call	1060	2.375	0.218
2 1/2	C8008-025AB *	Call	880	2.875	0.276
3	C8008-030AB *	Call	700	3.500	0.300
4	C8008-040AB *	Call	520	4.500	0.337
6	C8008-060AB *	Call	220	6.625	0.432
8	C8008-080AB *	Call	100	8.625	0.500
10	C8008-100AB *	Call	80	10.750	0.593
12	C8008-120AB *	Call	60	12.750	0.687

^ = 40% Restock Charge

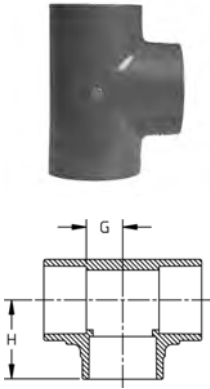
\* = Non-Cancelable/Non-Returnable

+GF+

# Schedule 80 CPVC

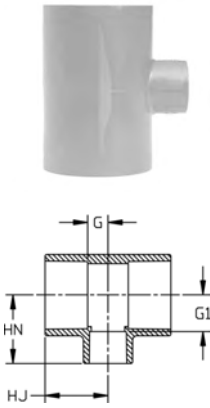
## Schedule 80 CPVC Pressure Fittings

### Tee (S x S x S)



Size [inch]	P/L	Part No.	USD	Pack Qty	H [inch]	G [inch]	Design
½	25	9801-005	13.45	25	1.49	0.50	SL
¾	25	9801-007	13.69	15	1.61	0.56	SL
1	25	9801-010	16.78	20	1.86	0.72	SL
1 ¼	25	9801-012	35.39	5	2.19	0.91	SL
1 ½	25	9801-015	40.54	5	2.44	1.06	SL
2	25	9801-020	45.12	5	2.82	1.32	SL
2 ½	25	9801-025	114.86	5	3.33	1.50	SL
3	25	9801-030	114.86	5	3.75	1.85	SL
4	25	9801-040	152.86	5	4.63	2.38	SL
6	25	9801-060	397.80	2	6.53	3.53	SL
8	25	9801-080	1139.51	1	8.63	4.59	SL
10	02	9801-100	2254.29	1	11.25	5.75	SL
12	02	9801-120	3483.94	1	13.35	6.89	SL

### Reducing Tee (S x S x S)

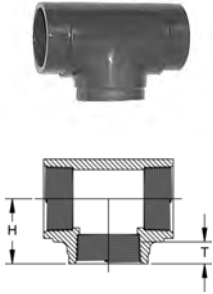


Size [inch]	P/L	Part No.	USD	Pack Qty	HJ [inch]	HN [inch]	G [inch]	G1 [inch]	Design
¾ x ½	25	9801-101	30.01	25	1.63	1.63	0.61	0.73	SL
1 x ½	25	9801-130	34.59	25	1.88	1.63	0.73	0.75	SL
1 x ¾	25	9801-131	34.59	25	1.88	1.87	0.73	0.86	SL
1 ¼ x 1	25	9801-168	42.90	20	2.00	2.00	0.73	0.91	SL
1 ½ x ½	25	9801-209	70.70	5	2.41	2.70	1.03	1.82	SL
1 ½ x ¾	25	9801-210	70.70	5	2.00	2.00	0.61	1.05	SL
1 ½ x 1	25	9801-211	70.70	5	2.13	2.20	0.73	0.81	SL
2 x ½	25	9801-247	84.22	5	2.78	3.06	1.28	1.22	SL
2 x ¾	25	9801-248	84.22	5	2.13	2.31	0.73	1.29	SL
2 x 1	25	9801-249	84.22	5	2.25	2.44	0.73	1.26	SL
2 x 1 ½	25	9801-251	84.22	5	2.56	2.69	1.05	1.29	SL
2 ½ x 2	25	9801-292	100.10	5	3.04	3.04	1.28	1.53	SL
3 x 2	25	9801-338	171.84	5	3.21	3.40	1.31	1.87	SL
4 x 2	25	9801-420	217.19	5	3.52	3.88	1.26	2.37	SL
4 x 3	25	9801-422	217.19	5	4.15	4.31	1.87	2.39	SL
6 x 2	25	9801-528FB *	694.09	2	6.58	7.21	3.56	5.65	BUSH
6 x 3	25	9801-530FB *	694.09	2	6.58	7.21	3.56	5.26	BUSH
6 x 4	25	9801-532	613.41	2	6.58	6.81	3.49	4.50	HS
8 x 6	25	9801-585	1126.03	1	7.63	7.52	3.59	4.50	SL
10 x 2	06	9801-619H *	748.73	1	9.69	9.13	4.69	7.63	FAB
10 x 3	06	9801-621H *	1008.97	1	10.25	9.63	5.25	7.76	FAB
10 x 4	06	9801-623H *	1066.51	1	10.75	10.13	5.75	7.88	FAB
10 x 6	02	9801-626FB *	1983.79	1	11.25	11.88	5.75	8.32	BUSH
10 x 6	06	9801-626H *	1169.04	1	11.81	11.13	6.81	7.88	FAB
10 x 8	02	9801-628FB *	3245.46	1	11.25	11.88	5.75	7.32	BUSH
10 x 8	06	9801-628H *	1355.98	1	12.81	12.38	7.81	8.13	FAB
12 x 2	06	9801-659H *	1270.64	1	10.69	10.13	4.69	8.63	FAB
12 x 3	06	9801-661H *	1401.45	1	11.25	10.63	5.25	8.76	FAB
12 x 4	06	9801-663H *	1459.35	1	11.75	11.13	5.75	8.88	FAB
12 x 6	06	9801-666H *	1583.51	1	12.81	12.13	6.81	8.88	FAB
12 x 8	02	9801-668FB *	3099.74	1	13.35	14.00	6.89	9.52	BUSH
12 x 8	06	9801-668H *	1772.76	1	13.81	13.38	7.81	9.13	FAB
12 x 10	02	9801-670FB *	4730.27	1	13.35	14.00	6.89	8.52	BUSH
12 x 10	06	9801-670H *	2045.95	1	14.88	14.88	8.88	9.63	FAB

^ = 40% Restock Charge  
\* = Non-Cancelable/Non-Returnable

# Schedule 80 CPVC

## Tee (FPT x FPT x FPT)



Size [inch]	P/L	Part No.	USD	Pack Qty	H [inch]	T [inch]	Design
¼	25	9805-002 *	31.61	50	0.92	0.40	HS
⅜	25	9805-003 *	31.61	50	1.16	0.41	HS
½	25	9805-005 ^	29.89	25	1.27	0.53	HS
¾	25	9805-007 ^	43.05	15	1.38	0.55	HS
1	25	9805-010 ^	46.37	15	1.70	0.68	HS
1 ¼	25	9805-012 ^	46.64	10	1.93	0.71	HS
1 ½	25	9805-015 ^	48.97	10	2.08	0.72	HS
2	25	9805-020 ^	54.40	5	2.35	0.76	HS
2 ½	25	9805-025 ^	267.44	5	2.88	1.14	HS
3	25	9805-030 ^	310.30	5	3.50	1.20	HS
4	25	9805-040 ^	735.11	5	4.06	1.30	HS

## 90° EII (S x S)



Size [inch]	P/L	Part No.	USD	Pack Qty	H [inch]	G [inch]	Design
¼	25	9806-002 *	15.46	50	0.95	0.33	HS
⅜	25	9806-003 *	15.46	50	1.17	0.41	HS
½	25	9806-005	5.74	25	1.41	0.50	SL
¾	25	9806-007	7.32	25	1.61	0.56	SL
1	25	9806-010	11.63	10	1.86	0.69	SL
1 ¼	25	9806-012	25.16	10	2.16	0.91	SL
1 ½	25	9806-015	28.06	10	2.41	1.03	SL
2	25	9806-020	33.87	10	2.78	1.28	SL
2 ½	25	9806-025	78.00	5	3.29	1.53	SL
3	25	9806-030	88.32	5	3.75	1.85	SL
4	25	9806-040	159.07	5	4.59	2.34	SL
6	25	9806-060	319.64	2	6.70	3.69	SL
8	25	9806-080	782.19	1	8.52	4.47	SL
10	02	9806-100	2090.31	1	10.75	5.75	SL
12	02	9806-120	2828.19	1	12.63	6.06	SL

## 90° EII (S x FPT)

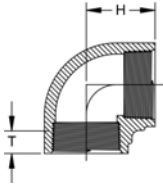


Size [inch]	P/L	Part No.	USD	Pack Qty	HJ [inch]	HN [inch]	G [inch]	T [inch]	Design
½	25	9807-005	15.14	25	1.38	1.28	0.50	0.53	HS
¾	25	9807-007	17.78	25	1.57	1.38	0.56	0.55	HS
1	25	9807-010	23.28	10	1.82	1.70	0.69	0.68	HS

^ = 40% Restock Charge  
\* = Non-Cancelable/Non-Returnable

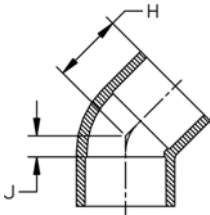
# Schedule 80 CPVC

## 90° EII (FPT x FPT)



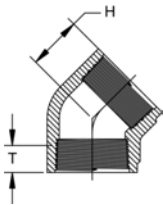
Size [inch]	P/L	Part No.	USD	Pack Qty	H [inch]	T [inch]	Design
¼	25	9808-002 *	16.26	50	0.92	0.40	HS
⅜	25	9808-003 *	16.26	50	1.00	0.41	HS
½	25	9808-005 ^	8.93	25	1.29	0.53	HS
¾	25	9808-007 ^	13.35	20	1.38	0.55	HS
1	25	9808-010 ^	18.74	10	1.70	0.68	HS
1 ¼	25	9808-012 ^	36.10	10	1.93	0.71	HS
1 ½	25	9808-015 ^	38.85	10	2.06	0.72	HS
2	25	9808-020 ^	52.07	5	2.36	0.76	HS
2 ½	25	9808-025 ^	161.59	5	3.00	1.14	HS
3	25	9808-030 ^	173.27	5	3.50	1.20	HS
4	25	9808-040 ^	271.14	5	4.13	1.30	HS

## 45° EII (S x S)



Size [inch]	P/L	Part No.	USD	Pack Qty	H [inch]	J [inch]	Design
¼	25	9817-002 *	21.86	25	0.81	0.13	HS
⅜	25	9817-003 *	21.86	25	0.97	0.22	HS
½	25	9817-005	7.02	25	1.21	0.25	SL
¾	25	9817-007	10.14	20	1.32	0.33	SL
1	25	9817-010	16.12	25	1.47	0.29	SL
1 ¼	25	9817-012	31.66	15	1.68	0.38	SL
1 ½	25	9817-015	32.51	10	1.88	0.44	SL
2	25	9817-020	36.46	5	2.16	0.60	SL
2 ½	25	9817-025	74.51	5	2.53	0.76	SL
3	25	9817-030	95.74	5	2.66	0.78	SL
4	25	9817-040	131.43	5	3.24	0.95	SL
6	25	9817-060	404.89	2	4.81	1.74	SL
8	25	9817-080	842.38	2	6.11	2.02	SL
10	02	9817-100	1598.53	1	7.50	2.50	SL
12	02	9817-120	2812.33	1	9.00	3.00	SL

## 45° EII (FPT x FPT)

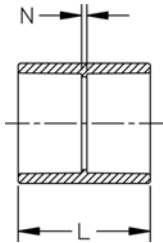


Size [inch]	P/L	Part No.	USD	Pack Qty	H [inch]	T [inch]	Design
¼	25	9819-002 *	21.62	50	0.76	0.40	HS
⅜	25	9819-003 *	21.62	50	0.94	0.41	HS
½	25	9819-005 ^	19.38	25	1.02	0.53	HS
¾	25	9819-007 ^	21.29	20	1.14	0.55	HS
1	25	9819-010 ^	23.43	25	1.33	0.68	HS
1 ¼	25	9819-012 ^	40.02	15	1.40	0.71	HS
1 ½	25	9819-015 ^	40.02	10	1.52	0.72	HS
2	25	9819-020 ^	52.84	5	1.72	0.76	HS
3	25	9819-030 ^	144.28	5	2.44	1.20	HS
4	25	9819-040 ^	226.94	5	2.77	1.30	HS

^ = 40% Restock Charge  
\* = Non-Cancelable/Non-Returnable

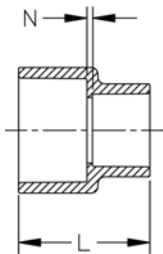
# Schedule 80 CPVC

## Coupling (S x S)



Size [inch]	P/L	Part No.	USD	Pack Qty	L [inch]	N [inch]	Design
¼	25	9829-002 *	16.47	50	1.39	0.14	HS
⅜	25	9829-003 *	16.47	50	1.64	0.14	HS
½	25	9829-005	6.06	25	1.93	0.13	SL
¾	25	9829-007	8.47	20	2.18	0.13	SL
1	25	9829-010	11.41	25	2.41	0.13	SL
1 ¼	25	9829-012	17.09	25	2.64	0.12	SL
1 ½	25	9829-015	21.51	10	2.90	0.13	SL
2	25	9829-020	25.00	5	3.14	0.12	SL
2 ½	25	9829-025	55.64	5	3.75	0.16	SL
3	25	9829-030	60.46	5	4.05	0.25	SL
4	25	9829-040	79.23	5	4.79	0.25	SL
6	25	9829-060	186.61	2	6.41	0.34	SL
8	25	9829-080	504.33	2	8.40	0.34	SL
10	02	9829-100	634.38	2	10.54	0.50	SL
12	02	9829-120	743.02	1	12.54	0.50	SL

## Reducing Coupling (S x S)



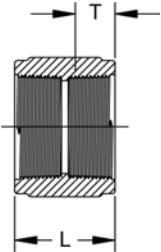
Size [inch]	P/L	Part No.	USD	Pack Qty	L [inch]	N [inch]	Design
¾ x ½	25	9829-101	15.86	25	2.16	0.14	HS
1 x ½	25	9829-130	22.62	25	2.12	0.09	HS
1 x ¾	25	9829-131	22.62	25	2.26	0.12	HS
1 ½ x ½	25	9829-209FB *	51.38	15	2.93	0.64	BUSH
1 ½ x ¾	25	9829-210FB *	51.38	15	2.93	0.54	BUSH
1 ½ x 1	25	9829-211	51.38	15	2.66	0.10	HS
1 ½ x 1 ¼	25	9829-212	51.38	20	2.82	0.10	HS
2 x ½	25	9829-247FB *	67.94	5	3.39	0.87	BUSH
2 x ¾	25	9829-248FB *	67.94	5	3.39	0.77	BUSH
2 x 1	25	9829-249	67.94	5	3.12	0.33	HS
2 x 1 ¼	25	9829-250	67.94	5	3.37	0.52	HS
2 x 1 ½	25	9829-251	67.94	5	3.05	0.10	HS
2 ½ x 1 ½	25	9829-291	77.36	5	3.30	0.13	HS
3 x 2	25	9829-338	156.31	5	3.61	0.16	HS
4 x 2	25	9829-420FB *	186.47	5	4.94	1.12	BUSH
4 x 3	25	9829-422	186.47	5	4.39	0.26	HS
6 x 4	25	9829-532	423.57	2	10.25	3.50	HS
8 x 4	25	9829-582FB *	768.61	1	8.75	2.59	BUSH
8 x 6	25	9829-585	733.90	2	9.12	2.07	HS
10 x 6	02	9829-626FB *	1141.32	1	11.17	3.07	BUSH
10 x 8	02	9829-628FB *	1141.32	1	11.17	2.07	BUSH
12 x 8	02	9829-668FB *	1243.52	1	13.17	3.13	BUSH
12 x 10	02	9829-670FB *	1243.52	1	13.17	2.13	BUSH

^ = 40% Restock Charge

\* = Non-Cancelable/Non-Returnable

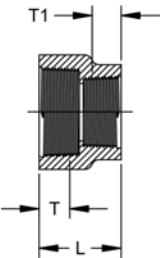
# Schedule 80 CPVC

## Coupling (FPT x FPT)



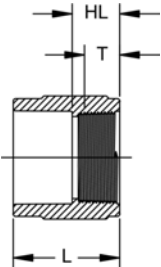
Size [inch]	P/L	Part No.	USD	Pack Qty	L [inch]	T [inch]	Design
¼	25	9830-002 *	20.71	50	1.30	0.40	HS
⅜	25	9830-003 *	20.71	50	1.34	0.41	HS
½	25	9830-005 ^	16.12	25	1.66	0.53	HS
¾	25	9830-007 ^	26.04	25	1.73	0.55	HS
1	25	9830-010 ^	29.56	25	2.10	0.68	HS
1 ¼	25	9830-012 ^	31.35	25	2.19	0.71	HS
1 ½	25	9830-015 ^	33.69	10	2.22	0.72	HS
2	25	9830-020 ^	39.71	5	2.29	0.76	HS
3	25	9830-030 ^	82.95	5	3.57	1.20	HS
4	25	9830-040 ^	169.09	5	3.73	1.30	HS

## Reducing Coupling (FPT x FPT)



Size [inch]	P/L	Part No.	USD	Pack Qty	L [inch]	T [inch]	T1 [inch]	Design
½ x ¼	25	9830-072 *	27.32	50	1.45	0.53	0.40	HS
½ x ⅜	25	9830-073 *	27.32	50	1.46	0.53	0.41	HS
¾ x ½	25	9830-101 ^	26.41	25	1.69	0.55	0.53	HS
1 x ½	25	9830-130 ^	28.83	25	1.83	0.68	0.53	HS
1 x ¾	25	9830-131 ^	34.77	25	1.88	0.68	0.55	HS
1 ½ x 1	25	9830-211 ^	67.67	20	1.91	0.71	0.68	HS

## Female Adapter (S x FPT)

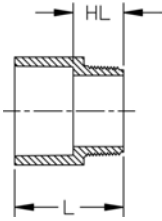


Size [inch]	P/L	Part No.	USD	Pack Qty	HL [inch]	L [inch]	T [inch]	Design
¼	25	9835-002 *	20.91	50	0.75	1.43	0.40	HS
½	25	9835-005	9.80	25	0.91	1.79	0.53	HS
¾	25	9835-007	9.71	20	0.95	1.96	0.55	HS
1	25	9835-010	23.91	25	1.11	2.26	0.68	HS
1 ¼	25	9835-012	24.48	10	1.16	2.44	0.71	HS
1 ½	25	9835-015	28.52	10	1.19	2.58	0.72	HS
2	25	9835-020	49.15	5	1.23	2.74	0.76	HS
3	25	9835-030	193.44	5	1.91	3.82	1.20	HS
4	25	9835-040	321.97	5	2.02	4.29	1.30	HS
6	06	9835-060H *	692.97	1	4.50	7.50	1.51	FAB
8	06	9835-080H *	753.21	1	4.25	8.50	1.71	FAB
10	06	9835-100H *	946.32	1	5.00	10.00	1.93	FAB
12	06	9835-120H *	1132.84	1	5.00	11.00	2.13	FAB

^ = 40% Restock Charge  
\* = Non-Cancelable/Non-Returnable

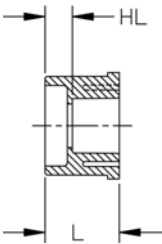
# Schedule 80 CPVC

## Male Adapter (S x MPT)



Size [inch]	P/L	Part No.	USD	Pack Qty	HL [inch]	L [inch]	Design
1/2	25	9836-005	7.83	50	0.98	1.86	HS
3/4	25	9836-007	9.55	25	1.00	2.04	SL
1	25	9836-010	16.09	25	1.21	2.39	HS
1 1/4	25	9836-012	23.72	15	1.29	2.56	HS
1 1/2	25	9836-015	32.05	15	1.32	2.72	HS
2	25	9836-020	43.48	5	1.35	2.88	HS
3	25	9836-030	159.32	5	2.02	3.92	HS
4	25	9836-040	269.34	5	2.08	4.40	HS
6	06	9836-060H *	572.45	1	3.50	7.00	FAB
8	06	9836-080H *	650.78	1	4.00	8.00	FAB
10	06	9836-100H *	771.30	1	4.50	9.50	FAB
12	06	9836-120H *	847.54	1	5.50	11.50	FAB

## Flush Style Reducer Bushing (SPG x S)



Size [inch]	P/L	Part No.	USD	Pack Qty	HL [inch]	L [inch]	Design
1/2 x 1/4	25	9837-072 *	13.40	50	0.46	1.14	FLUSH
1/2 x 3/8	25	9837-073 *	13.40	50	0.32	1.10	FLUSH
3/4 x 1/2	25	9837-101	6.46	50	0.40	1.29	FLUSH
1 x 1/2	25	9837-130	10.04	50	0.54	1.42	FLUSH
1 x 3/4	25	9837-131	10.04	50	0.44	1.42	FLUSH
1 1/4 x 1/2	25	9837-166	26.66	25	0.66	1.56	FLUSH
1 1/4 x 3/4	25	9837-167	26.66	25	0.55	1.57	FLUSH
1 1/4 x 1	25	9837-168	26.66	25	0.42	1.57	FLUSH
1 1/2 x 1/2	25	9837-209	30.14	25	0.77	1.68	FLUSH
1 1/2 x 3/4	25	9837-210	30.14	25	0.67	1.69	FLUSH
1 1/2 x 1	25	9837-211	30.14	25	0.55	1.68	FLUSH
1 1/2 x 1 1/4	25	9837-212	30.14	25	0.42	1.70	FLUSH
2 x 1/2	25	9837-247	38.90	10	0.88	1.79	FLUSH
2 x 3/4	25	9837-248	38.90	10	0.78	1.81	FLUSH
2 x 1	25	9837-249	38.90	10	0.66	1.81	FLUSH
2 x 1 1/4	25	9837-250	38.90	10	0.56	1.82	FLUSH
2 x 1 1/2	25	9837-251	38.90	10	0.40	1.80	FLUSH
2 1/2 x 1 1/2	25	9837-291	47.38	5	0.96	2.43	FLUSH
2 1/2 x 2	25	9837-292	47.38	5	0.55	2.13	FLUSH
3 x 1	25	9837-335FB *	72.18	5	1.53	2.68	BUSH
3 x 1 1/2	25	9837-337	72.18	5	0.92	2.43	FLUSH
3 x 2	25	9837-338	72.18	5	0.87	2.43	FLUSH
3 x 2 1/2	25	9837-339	72.18	5	0.39	2.23	FLUSH
4 x 2	25	9837-420	79.81	5	1.15	2.72	FLUSH
4 x 3	25	9837-422	79.81	5	0.77	2.76	FLUSH
6 x 3	25	9837-530	171.22	2	1.79	3.66	FLUSH
6 x 4	25	9837-532	170.02	2	1.13	3.66	FLUSH
8 x 6	25	9837-585	559.74	1	1.56	4.66	FLUSH
10 x 4	02	9837-623FB *	1229.73	1	3.75	6.00	BUSH
10 x 6	02	9837-626 *	990.68	2	2.57	5.66	FLUSH
10 x 8	02	9837-628	990.68	1	1.57	5.66	FLUSH
12 x 6	02	9837-666FB *	1187.67	1	4.19	7.29	BUSH
12 x 8	02	9837-668 *	1249.00	1	2.63	6.72	FLUSH
12 x 10	02	9837-670	894.32	1	1.63	6.72	FLUSH

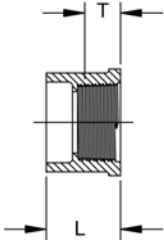
^ = 40% Restock Charge

\* = Non-Cancelable/Non-Returnable

+GF+

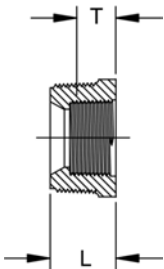
# Schedule 80 CPVC

## Flush Style Reducer Bushing (SPG x FPT)



Size [inch]	P/L	Part No.	USD	Pack Qty	L [inch]	T [inch]	Design
1/2 x 1/4	25	9838-072 *	14.40	50	1.14	0.40	FLUSH
1/2 x 3/8	25	9838-073 *	14.40	50	1.12	0.41	FLUSH
3/4 x 1/4	25	9838-098 *	16.41	50	1.21	0.40	FLUSH
3/4 x 1/2	25	9838-101	7.05	50	1.28	0.53	FLUSH
1 x 1/2	25	9838-130	8.94	50	1.42	0.53	FLUSH
1 x 3/4	25	9838-131	8.94	50	1.41	0.55	FLUSH
1 1/4 x 1/2	25	9838-166	28.87	15	1.53	0.53	FLUSH
1 1/4 x 3/4	25	9838-167	28.87	15	1.56	0.55	FLUSH
1 1/4 x 1	25	9838-168	28.87	15	1.55	0.68	FLUSH
1 1/2 x 1/2	25	9838-209	35.56	15	1.68	0.53	FLUSH
1 1/2 x 3/4	25	9838-210	35.56	15	1.68	0.55	FLUSH
1 1/2 x 1	25	9838-211	35.56	15	1.69	0.68	FLUSH
1 1/2 x 1 1/4	25	9838-212	35.56	15	1.68	0.71	FLUSH
2 x 1/2	25	9838-247	48.89	10	1.80	0.53	FLUSH
2 x 3/4	25	9838-248	48.89	10	1.80	0.55	FLUSH
2 x 1	25	9838-249	48.89	10	1.79	0.68	FLUSH
2 x 1 1/4	25	9838-250	48.89	10	1.78	0.71	FLUSH
2 x 1 1/2	25	9838-251	48.89	10	1.79	0.72	FLUSH
2 1/2 x 1 1/2	25	9838-291	77.68	5	2.11	0.72	FLUSH
2 1/2 x 2	25	9838-292	77.68	5	2.20	0.76	FLUSH
3 x 2	25	9838-338	173.16	5	2.44	0.76	FLUSH
4 x 2	25	9838-420	352.84	5	2.73	0.76	FLUSH
4 x 3	25	9838-422	352.84	5	2.75	0.38	FLUSH

## Flush Style Reducer Bushing (MPT x FPT)

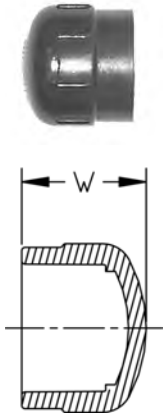


Size [inch]	P/L	Part No.	USD	Pack Qty	L [inch]	T [inch]	Style
3/8 x 1/4	25	9839-052 *	19.77	50	0.79	0.40	FLUSH
1/2 x 1/4	25	9839-072 *	19.77	50	0.96	0.40	FLUSH
1/2 x 3/8	25	9839-073 *	19.77	50	0.94	0.41	FLUSH
3/4 x 3/8	25	9839-099 *	21.78	50	1.02	0.41	FLUSH
3/4 x 1/2	25	9839-101 ^	8.67	50	1.08	0.53	FLUSH
1 x 1/2	25	9839-130 ^	14.61	25	1.24	0.53	FLUSH
1 x 3/4	25	9839-131 ^	14.61	25	1.27	0.55	FLUSH
1 1/4 x 1	25	9839-168 ^	28.79	25	1.30	0.68	FLUSH
1 1/2 x 3/4	25	9839-210 ^	34.95	25	1.33	0.55	FLUSH
1 1/2 x 1	25	9839-211 ^	34.95	25	1.34	0.68	FLUSH
1 1/2 x 1 1/4	25	9839-212 ^	34.68	25	1.32	0.71	FLUSH
2 x 1	25	9839-249 ^	38.66	10	1.43	0.68	FLUSH
2 x 1 1/4	25	9839-250 ^	38.66	10	1.43	0.71	FLUSH
2 x 1 1/2	25	9839-251 ^	38.66	10	1.35	0.72	FLUSH

^ = 40% Restock Charge  
\* = Non-Cancelable/Non-Returnable

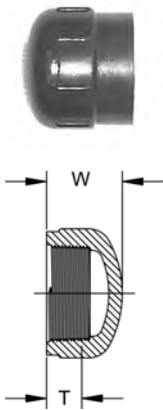
# Schedule 80 CPVC

## Cap (S)



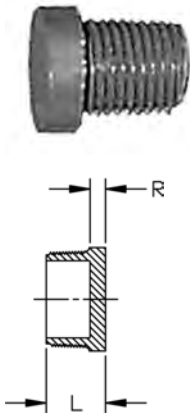
Size [inch]	P/L	Part No.	USD	Pack Qty	W [inch]	Design
1/2	25	9847-005	9.44	50	1.29	HS
3/4	25	9847-007	13.45	25	1.46	HS
1	25	9847-010	23.80	25	1.67	HS
1 1/4	25	9847-012	26.04	15	1.88	HS
1 1/2	25	9847-015	26.04	10	2.09	HS
2	25	9847-020	27.46	5	2.32	HS
2 1/2	25	9847-025	92.45	5	2.73	HS
3	25	9847-030	101.34	5	3.05	HS
4	25	9847-040	103.01	5	3.67	HS
6	25	9847-060	340.86	2	4.93	HS
8	25	9847-080	1034.39	2	6.29	SL
10	02	9847-100	864.18	1	7.88	SL
12	02	9847-120	947.13	1	9.38	SL

## Cap (FPT)



Size [inch]	P/L	Part No.	USD	Pack Qty	W [inch]	T [inch]	Design
1/4	25	9848-002 *	12.92	50	0.93	0.40	HS
3/8	25	9848-003 *	12.92	50	0.95	0.41	HS
1/2	25	9848-005 ^	10.49	50	1.16	0.53	HS
3/4	25	9848-007 ^	17.36	25	1.24	0.55	HS
1	25	9848-010 ^	24.30	25	1.50	0.68	HS
1 1/4	25	9848-012 ^	43.34	15	1.61	0.71	HS
1 1/2	25	9848-015 ^	44.40	10	1.66	0.72	HS
2	25	9848-020 ^	63.96	5	1.84	0.76	HS

## Plug (MPT)



Size [inch]	P/L	Part No.	USD	Pack Qty	L [inch]	R [inch]	Design
1/4	25	9850-002 *	10.37	50	0.81	0.22	HS
3/8	25	9850-003 *	10.37	50	0.83	0.22	HS
1/2	25	9850-005	8.53	50	0.97	0.22	HS
3/4	25	9850-007	10.80	50	1.04	0.25	HS
1	25	9850-010	17.77	25	1.25	0.27	HS
1 1/2	25	9850-015	22.27	20	1.38	0.34	HS
2	25	9850-020	30.31	10	1.46	0.40	HS
2 1/2	25	9850-025	51.46	10	2.00	0.38	HS
3	25	9850-030	55.11	5	2.00	0.38	HS
4	25	9850-040	97.78	5	2.15	0.38	HS
6	06	9850-060H *	366.26	1	4.00	1.00	FAB
8	06	9850-080H *	522.87	1	4.00	1.00	FAB
10	06	9850-100H *	553.97	1	4.00	1.00	FAB
12	06	9850-120H *	591.33	1	4.00	1.00	FAB

^ = 40% Restock Charge

\* = Non-Cancelable/Non-Returnable

+GF+

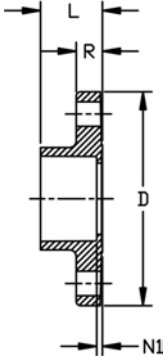
# Schedule 80 CPVC

## Flange - One Piece (S)

150 psi @ 73°F (10.3 bar @ 22.7°C)

HC = Honeycomb (Front)

WEB = Webbed (Back)



Size [inch]	P/L	Part No.	USD
1/2	25	<b>9851-005</b>	<b>25.53</b>
3/4	25	<b>9851-007</b>	<b>26.12</b>
1	25	<b>9851-010</b>	<b>28.52</b>
1 1/4	25	<b>9851-012</b>	<b>34.81</b>
1 1/2	25	<b>9851-015</b>	<b>38.64</b>
2	25	<b>9851-020</b>	<b>46.77</b>
2 1/2	25	<b>9851-025</b>	<b>96.91</b>
3	25	<b>9851-030</b>	<b>101.34</b>
4	25	<b>9851-040</b>	<b>136.91</b>
6	25	<b>9851-060</b>	<b>233.23</b>

Size [inch]	Pack Qty	# holes	Bolt Dia. [inch]	bolt cir. dia. [inch]	D [inch]	L [inch]	N1 [inch]	R [inch]	Design
1/2	5	4	1/2	2.38	3.50	1.03	0.15	0.43	SOLID
3/4	5	4	1/2	2.75	3.88	1.21	0.19	0.44	SOLID
1	5	4	1/2	3.13	4.23	1.29	0.15	0.56	HC
1 1/4	5	4	1/2	3.50	4.63	1.42	0.16	0.56	HC
1 1/2	5	4	1/2	3.88	5.00	1.54	0.16	0.71	HC
2	5	4	5/8	4.75	6.00	1.77	0.16	0.74	HC
2 1/2	5	4	5/8	5.50	7.00	2.01	0.19	0.89	SOLID
3	5	4	5/8	6.00	7.50	2.20	0.31	1.12	WEB
4	5	8	5/8	7.50	9.00	2.55	0.22	1.27	WEB
6	2	8	3/4	9.50	11.00	3.86	0.34	1.45	HC

^ = 40% Restock Charge  
\* = Non-Cancelable/Non-Returnable

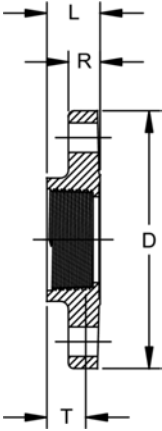
# Schedule 80 CPVC

## Flange - One Piece (FPT)

150 psi @ 73°F (10.3 bar @ 22.7°C)

HC = Honeycomb (Front)

WEB = Webbed (Back)



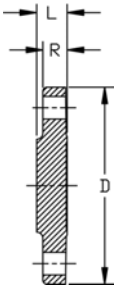
Size [inch]	P/L	Part No.	USD
1/2	25	9852-005 ^	35.69
3/4	25	9852-007 ^	43.27
1	25	9852-010 ^	47.22
1 1/4	25	9852-012 ^	65.54
1 1/2	25	9852-015 ^	69.38
2	25	9852-020 ^	70.65
2 1/2	25	9852-025 ^	82.00
3	25	9852-030 ^	113.79
4	25	9852-040 ^	176.90

Size [inch]	Pack Qty	# holes	Bolt Dia. [inch]	bolt cir. dia. [inch]	D [inch]	L [inch]	T [inch]	R [inch]	Design
1/2	5	4	1/2	2.38	3.50	0.94	0.53	0.44	SOLID
3/4	5	4	1/2	2.75	3.88	0.95	0.55	0.51	SOLID
1	5	4	1/2	3.13	4.25	1.13	0.68	0.55	HC
1 1/4	5	4	1/2	3.50	4.63	1.19	0.71	0.63	HC
1 1/2	5	4	1/2	3.88	5.00	1.21	0.72	0.72	HC
2	5	4	5/8	4.75	6.00	1.23	0.76	0.75	HC
2 1/2	5	4	5/8	5.50	7.00	1.75	1.14	0.80	HC
3	5	4	5/8	6.00	7.50	1.88	1.20	0.98	WEB
4	5	8	5/8	7.50	9.00	1.99	1.30	1.24	WEB

## Flange (Blind)

150 psi @ 73°F (10.3 bar @ 22.7°C)

HC = Honeycomb (Front)



Size [inch]	P/L	Part No.	USD	Pack Qty	# holes	Bolt Dia. [inch]	bolt cir. dia. [inch]	D [inch]	L [inch]	R [inch]	Design
1/2	25	9853-005	38.27	5	4	1/2	2.38	3.50	0.50	0.43	HC
3/4	25	9853-007	41.49	5	4	1/2	2.75	3.88	0.50	0.44	HC
1	25	9853-010	51.72	5	4	1/2	3.13	4.25	0.60	0.57	HC
1 1/4	25	9853-012	58.52	5	4	1/2	3.50	4.63	0.63	0.56	HC
1 1/2	25	9853-015	81.90	5	4	1/2	3.88	5.00	0.82	0.71	HC
2	25	9853-020	86.04	5	4	5/8	4.75	6.00	0.92	0.74	HC
2 1/2	25	9853-025	130.16	5	4	5/8	5.50	7.00	0.96	0.78	HC
3	25	9853-030	161.81	5	4	5/8	6.00	7.50	1.03	0.89	HC
4	25	9853-040	219.18	5	8	5/8	7.50	9.00	1.35	1.12	HC
6	25	9853-060	367.66	2	8	3/4	9.50	11.00	1.49	1.27	HC
8	25	9853-080	681.96	2	8	3/4	11.75	13.50	1.63	1.45	HC
10	06	9853-100H *	1229.64	1	12	7/8	14.25	16.00	1.00	1.00	SOLID
12	06	9853-120H *	2065.79	1	12	7/8	17.00	19.00	1.00	1.00	SOLID

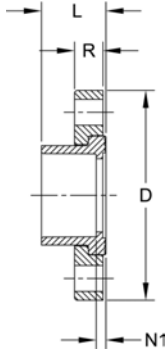
^ = 40% Restock Charge

\* = Non-Cancelable/Non-Returnable

# Schedule 80 CPVC

## Flange - Van Stone (S)

150 psi @ 73°F (10.3 bar @ 22.7°C)  
 HC = Honeycomb (Front)

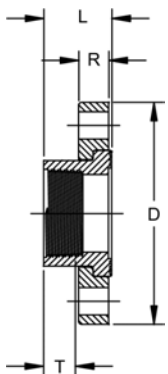


Size [inch]	P/L	Part No.	USD
1/2	25	9854-005	25.70
3/4	25	9854-007	26.28
1	25	9854-010	28.70
1 1/4	25	9854-012	35.04
1 1/2	25	9854-015	38.90
2	25	9854-020	47.11
2 1/2	25	9854-025	97.59
3	25	9854-030	102.18
4	25	9854-040	137.99
6	25	9854-060	235.13
8	25	9854-080	707.48
10	02	9854-100	1703.17
12	02	9854-120	2555.67

Size [inch]	Pack Qty	# holes	Bolt Dia. [inch]	bolt cir. dia. [inch]	D [inch]	L [inch]	N1 [inch]	R [inch]	Design
1/2	5	4	1/2	2.38	3.50	1.03	0.11	0.57	HC
3/4	5	4	1/2	2.75	3.88	1.15	0.13	0.58	HC
1	5	4	1/2	3.13	4.25	1.38	0.11	0.66	HC
1 1/4	5	4	1/2	3.50	4.63	1.45	0.14	0.69	HC
1 1/2	5	4	1/2	3.88	5.00	1.59	0.15	0.76	HC
2	5	4	5/8	4.75	6.00	1.76	0.20	0.82	HC
2 1/2	5	4	5/8	5.50	7.00	2.05	0.22	0.98	HC
3	5	4	5/8	6.00	7.50	2.25	0.30	1.02	HC
4	5	8	5/8	7.50	9.00	2.65	0.34	1.11	HC
6	2	8	3/4	9.50	11.00	3.59	0.48	1.27	HC
8	2	8	3/4	11.75	13.50	4.63	0.50	1.73	HC
10	2	12	7/8	14.25	16.00	5.63	0.50	1.73	HC
12	2	12	7/8	17.00	19.00	6.69	0.56	1.73	HC

## Flange - Van Stone (FPT)

150 psi @ 73°F (10.3 bar @ 22.7°C)  
 HC = Honeycomb (Front)



Size [inch]	P/L	Part No.	USD
1	25	9855-010 ^	47.55
1 1/4	25	9855-012 ^	65.44
1 1/2	25	9855-015 ^	69.87
2	25	9855-020 ^	71.18

Size [inch]	Pack Qty	# holes	Bolt Dia. [inch]	bolt cir. dia. [inch]	D [inch]	L [inch]	T [inch]	R [inch]	Design
1	5	4	1/2	3.13	4.25	1.38	0.68	0.66	HC
1 1/4	5	4	1/2	3.50	4.63	1.49	0.71	0.69	HC
1 1/2	5	4	1/2	3.88	5.00	1.61	0.72	0.76	HC
2	5	4	5/8	4.75	6.00	1.75	0.76	0.82	HC

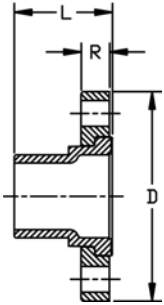
^ = 40% Restock Charge  
 \* = Non-Cancelable/Non-Returnable

# Schedule 80 CPVC

## Flange - Van Stone (SPG)

150 psi @ 73°F (10.3 bar @ 22.7°C)

HC = Honeycomb (Front)



Size [inch]	P/L	Part No.	USD	Pack Qty	# holes	Bolt Dia. [inch]	bolt cir. dia. [inch]	D [inch]	L [inch]	R [inch]	Design
1/2	25	<b>9856-005</b>	<b>29.72</b>	5	4	1/2	2.38	3.50	1.65	0.57	HC
3/4	25	<b>9856-007</b>	<b>31.90</b>	5	4	1/2	2.75	3.88	1.78	0.58	HC
1	25	<b>9856-010</b>	<b>36.22</b>	5	4	1/2	3.13	4.25	2.02	0.66	HC
1 1/4	25	<b>9856-012</b>	<b>44.82</b>	5	4	1/2	3.50	4.63	2.20	0.69	HC
1 1/2	25	<b>9856-015</b>	<b>49.56</b>	5	4	1/2	3.88	5.00	2.40	0.76	HC
2	25	<b>9856-020</b>	<b>69.37</b>	5	4	5/8	4.75	6.00	2.72	0.82	HC
2 1/2	25	<b>9856-025</b>	<b>108.65</b>	5	4	5/8	5.50	7.00	3.19	0.98	HC
3	25	<b>9856-030</b>	<b>118.98</b>	5	4	5/8	6.00	7.50	3.52	1.02	HC
4	25	<b>9856-040</b>	<b>122.44</b>	5	8	5/8	7.50	9.00	4.02	1.11	HC
6	25	<b>9856-060</b>	<b>267.33</b>	2	8	3/4	9.50	11.00	5.09	1.37	HC
8	25	<b>9856-080</b>	<b>544.91</b>	1	8	3/4	11.75	13.50	6.85	1.73	HC
10	02	<b>9856-100</b>	<b>1829.76</b>	1	12	7/8	14.25	16.00	8.33	1.73	HC
12	02	<b>9856-120</b>	<b>2748.57</b>	1	12	7/8	17.00	19.00	9.54	1.73	HC

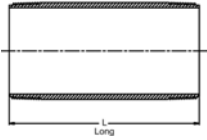
^ = 40% Restock Charge

\* = Non-Cancelable/Non-Returnable

**+GF+**

# Schedule 80 CPVC

## Nipple (MPT x MPT)



Size	P/L	Part No.	USD	Pack Qty	L [inch]
1/2 x CL	25	9861-077 *	4.97	50	1.13
1/2 x 2	25	9861-079 *	6.51	50	2.00
1/2 x 3	25	9861-081 *	8.34	50	3.00
1/2 x 4	25	9861-082 *	10.23	50	4.00
1/2 x 5	25	9861-083 *	12.13	50	5.00
1/2 x 6	25	9861-084 *	14.16	50	6.00
3/4 x CL	25	9861-104 *	6.56	25	1.38
3/4 x 2	25	9861-020 *	8.27	25	2.00
3/4 x 3	25	9861-106 *	10.61	25	3.00
3/4 x 4	25	9861-107 *	13.12	25	4.00
3/4 x 5	25	9861-108 *	15.52	25	5.00
3/4 x 6	25	9861-109 *	18.22	25	6.00
1 x CL	25	9861-133 *	9.01	25	1.50
1 x 2	25	9861-134 *	11.37	25	2.00
1 x 3	25	9861-135 *	14.29	25	3.00
1 x 4	25	9861-136 *	17.96	25	4.00
1 x 5	25	9861-137 *	21.59	25	5.00
1 x 6	25	9861-138 *	25.52	25	6.00
1 1/4 x CL	25	9861-170 *	13.18	25	1.63
1 1/4 x 2	25	9861-171 *	15.44	25	2.00
1 1/4 x 3	25	9861-172 *	19.20	25	3.00
1 1/4 x 4	25	9861-173 *	23.86	25	4.00
1 1/4 x 5	25	9861-174 *	28.52	25	5.00
1 1/4 x 6	25	9861-175 *	33.72	25	6.00
1 1/2 x CL	25	9861-213 *	13.06	25	1.75
1 1/2 x 2	25	9861-214 *	17.06	25	2.00
1 1/2 x 3	25	9861-215 *	21.03	25	3.00
1 1/2 x 4	25	9861-216 *	25.94	25	4.00
1 1/2 x 5	25	9861-217 *	31.64	25	5.00
1 1/2 x 6	25	9861-218 *	37.53	25	6.00
2 x CL	25	9861-251 *	21.77	25	2.00
2 x 2 1/2	25	9861-252 *	22.91	25	2.50
2 x 3	25	9861-253 *	28.82	25	3.00
2 x 4	25	9861-254 *	36.25	25	4.00
2 x 5	25	9861-255 *	43.35	25	5.00
2 x 6	25	9861-256 *	53.54	25	6.00
2 1/2 x CL	25	9861-291 *	27.19	5	2.50
2 1/2 x 3	25	9861-292 *	32.34	5	3.00
2 1/2 x 4	25	9861-295 *	38.78	5	4.00
2 1/2 x 5	25	9861-296 *	46.49	5	5.00
2 1/2 x 6	25	9861-297 *	55.22	5	6.00
3 x CL	25	9861-338 *	55.94	5	2.63
3 x 3	25	9861-340 *	56.01	5	3.00
3 x 4	25	9861-341 *	69.55	5	4.00
3 x 5	25	9861-342 *	86.36	5	5.00
3 x 6	25	9861-343 *	102.80	5	6.00
4 x CL	25	9861-422 *	78.31	5	2.88
4 x 4	25	9861-423 *	102.39	5	4.00
4 x 5	25	9861-425 *	122.59	5	5.00
4 x 6	25	9861-426 *	146.76	5	6.00

^ = 40% Restock Charge  
 \* = Non-Cancelable/Non-Returnable

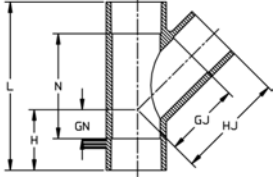
# Schedule 80 CPVC

## 45° Wye (S x S x S)

1-1/2" - 2" 235 psi @ 72°F (16.2 bar @ 22.7°C)

3" - 6" 150 psi @ 72°F (10.3 bar @ 22.7°C)

8" & Larger 100 psi @ 72°F (6.9 bar @ 22.7°C)



Size [inch]	P/L	Part No.	USD
1 1/2	25	9870-015 *	44.17
2	25	9870-020	108.16
3	25	9870-030	533.30
4	25	9870-040	563.83
6	25	9870-060	771.70
8	25	9870-080 *	1317.89
10	06	9875-100H *	1980.16
12	06	9875-120H *	2758.09

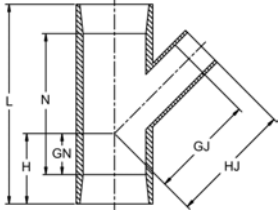
Size [inch]	Pack Qty	GJ [inch]	GN [inch]	H [inch]	HJ [inch]	L [inch]	N [inch]	Design
1 1/2	20	2.41	0.69	2.06	3.75	5.81	3.06	SL
2	10	3.61	1.38	2.89	5.16	8.05	5.00	SL
3	4	5.00	1.66	3.55	6.88	10.46	6.63	SL
4	4	6.38	1.84	4.20	8.75	12.96	8.25	SL
6	2	8.50	1.81	4.86	11.59	16.50	10.39	HS
8	1	11.06	2.06	6.06	15.25	21.25	13.31	SL
10	1	16.98	5.73	10.73	21.98	33.21	23.21	FAB
12	1	19.39	6.14	12.14	25.39	38.03	26.03	FAB

## Reducing 45° Wye (S x S x S)

2" 235 psi @ 72°F (16.2 bar @ 22.7°C)

3" - 6" 150 psi @ 72°F (10.3 bar @ 22.7°C)

8" 100 psi @ 72°F (6.9 bar @ 22.7°C)



Size [inch]	P/L	Part No.	USD
2 x 1 1/2	25	9870-251FB *	150.06
3 x 1 1/2	25	9870-337FB *	617.26
3 x 2	25	9870-338FB *	617.26
4 x 2	25	9870-420FB *	624.18
4 x 3	25	9870-422FB *	624.18
6 x 3	25	9870-530FB *	790.44
6 x 4	25	9870-532	603.56
8 x 4	25	9870-582FB *	2090.67
8 x 6	25	9870-585FB *	1915.95

Size [inch]	Pack Qty	GJ [inch]	GN [inch]	H [inch]	HJ [inch]	L [inch]	N [inch]	Design
2 x 1 1/2	10	4.01	0.66	2.16	5.41	3.06	5.00	BUSH
3 x 1 1/2	4	5.77	1.66	3.55	7.28	10.46	6.63	BUSH
3 x 2	4	5.72	1.66	3.55	7.28	10.46	6.63	BUSH
4 x 2	4	7.53	1.84	4.20	9.10	12.96	8.25	BUSH
4 x 3	4	7.15	1.84	4.20	9.14	12.96	8.25	BUSH
6 x 3	2	9.95	1.87	4.91	12.09	16.50	10.39	BUSH
6 x 4	2	7.18	1.87	4.91	9.45	16.50	10.39	HS
8 x 4	1	13.95	2.06	6.06	16.21	21.25	13.31	BUSH
8 x 6	1	12.62	2.06	6.06	15.72	21.25	13.31	BUSH

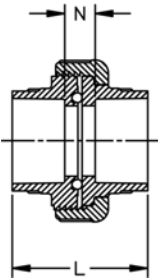
^ = 40% Restock Charge

\* = Non-Cancelable/Non-Returnable

# Schedule 80 CPVC

## Union Type 375 (S x S)

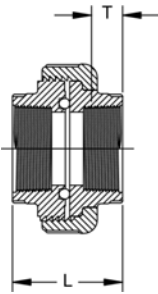
--Available Q2 2011--  
150 psi @ 73°F (10.3 bar @ 22.7°C)



Size [inch]	P/L	EPDM Part No.	USD	FPM Part No.	USD	Pack Qty	L [inch]	N [inch]	
1/2	25	9897-375-005	25.93	9857-375-005	26.01	25	2.16	0.41	
3/4	25	9897-375-007	26.85	9857-375-007	27.17	10	2.44	0.43	
1	25	9897-375-010	32.17	9857-375-010	32.61	5	2.66	0.53	
1 1/4	25	9897-375-012	65.14	9857-375-012	65.99	5	2.98	0.50	
1 1/2	25	9897-375-015	66.38	9857-375-015	67.19	5	3.28	0.56	
2	25	9897-375-020	110.01	9857-375-020	111.38	2	3.53	0.57	

## Union Type 375 (FPT X FPT)

--Available Q2 2011--  
150 psi @ 73°F (10.3 bar @ 22.7°C)



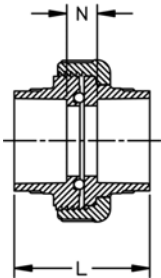
Size [inch]	P/L	EPDM Part No.	USD	FPM Part No.	USD	Pack Qty	L [inch]	T [inch]	
1/2	25	9898-375-005	27.51	9858-375-005	27.86	25	2.03	0.53	
3/4	25	9898-375-007	48.63	9858-375-007	49.24	10	2.11	0.55	
1	25	9898-375-010	67.06	9858-375-010	67.90	5	2.56	0.68	
1 1/4	25	9898-375-012	127.87	9858-375-012	129.37	5	2.79	0.71	
1 1/2	25	9898-375-015	127.87	9858-375-015	129.37	5	2.72	0.72	
2	25	9898-375-020	144.46	9858-375-020	146.23	2	2.89	0.76	

^ = 40% Restock Charge  
\* = Non-Cancelable/Non-Returnable

# Schedule 80 CPVC

## Union (S x S)

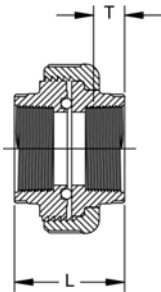
\*\*To be DISCONTINUED in 2012\*\*  
150 psi @ 73°F (10.3 bar @ 22.7°C)



Size [inch]	P/L	EPDM Part No.	USD	FPM Part No.	USD	Pack Qty	L [inch]	N [inch]	
1/4	25	9897-002 *	40.85	9857-002 *	41.37	25	1.61	0.31	
3/8	25	9897-003 *	40.85	9857-003 *	41.37	25	1.91	0.35	
1/2	25	9897-005 *	25.93	9857-005 *	26.01	25	2.31	0.56	
3/4	25	9897-007 *	26.85	9857-007 *	27.17	10	2.62	0.57	
1	25	9897-010 *	32.17	9857-010 *	32.61	5	2.91	0.62	
1 1/4	25	9897-012 *	65.14	9857-012 *	65.99	5	3.25	0.64	
1 1/2	25	9897-015 *	66.38	9857-015 *	67.19	5	3.38	0.70	
2	25	9897-020 *	110.01	9857-020 *	111.38	2	3.81	0.77	
3	25	9897-030 *	228.32	9857-030 *	231.17	1	4.75	0.99	
4	25	9897-040 *	291.99	9857-040 *	295.35	1	5.72	1.14	

## Union (FPT X FPT)

\*\*To be DISCONTINUED in 2012\*\*  
150 psi @ 73°F (10.3 bar @ 22.7°C)



Size [inch]	P/L	EPDM Part No.	USD	FPM Part No.	USD	Pack Qty	L [inch]	T [inch]	
3/8	25	9898-003 *	45.94	9858-003 *	46.49	25	1.58	0.41	
1/2	25	9898-005 *	27.51	9858-005 *	27.86	25	2.03	0.53	
3/4	25	9898-007 *	48.63	9858-007 *	49.24	10	2.11	0.55	
1	25	9898-010 *	67.06	9858-010 *	67.90	5	2.56	0.68	
1 1/4	25	9898-012 *	127.87	9858-012 *	129.37	5	2.79	0.71	
1 1/2	25	9898-015 *	127.87	9858-015 *	129.37	5	2.72	0.72	
2	25	9898-020 *	144.46	9858-020 *	146.23	2	2.89	0.76	
3	25	9898-030 *	404.90	9858-030 *	447.02	1	4.69	1.20	
4	25	9898-040 *	471.38	9858-040 *	480.53	1	5.62	1.30	

^ = 40% Restock Charge

\* = Non-Cancelable/Non-Returnable

+GF+

# Schedule 80 CPVC

## Schedule 80 CPVC Metal Transition Fittings

### CPVC-to-Brass Transition Fittings (SPG x FPT)

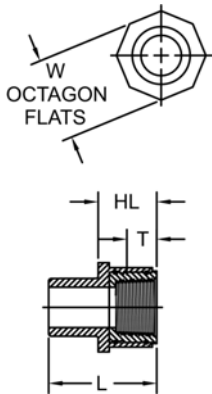
150 psi @ 73°F (10.3 bar @ 22.7°C)



Size [inch]	P/L	Part No.	USD	Pack Qty	HL [inch]	L [inch]	T [inch]	W [inch]
½	33	<b>9878-005BR</b>	<b>30.06</b>	25	1.02	1.76	0.53	1.25
¾	33	<b>9878-007BR</b>	<b>62.21</b>	15	1.09	2.08	0.55	1.50
1	33	<b>9878-010BR</b>	<b>109.17</b>	15	1.33	2.45	0.68	1.88
1 ¼	33	<b>9878-012BR</b>	<b>178.10</b>	15	1.39	2.51	0.71	2.25
1 ½	33	<b>9878-015BR</b>	<b>234.82</b>	10	1.45	2.76	0.72	2.56
2	33	<b>9878-020BR</b>	<b>293.52</b>	5	1.44	2.82	0.76	3.31

### CPVC-to-316 SS Transition Fittings (SPG x FPT)

150 psi @ 73°F (10.3 bar @ 22.7°C)



Size [inch]	P/L	Part No.	USD	Pack Qty	HL [inch]	L [inch]	T [inch]	W [inch]
½	33	<b>9878-005SS</b>	<b>59.02</b>	25	1.02	1.76	0.53	1.25
¾	33	<b>9878-007SS</b>	<b>82.40</b>	15	1.09	2.08	0.55	1.50
1	33	<b>9878-010SS</b>	<b>144.22</b>	15	1.33	2.45	0.68	1.88
1 ¼	33	<b>9878-012SS</b>	<b>234.38</b>	15	1.39	2.51	0.71	2.25
1 ½	33	<b>9878-015SS</b>	<b>305.78</b>	10	1.45	2.76	0.72	2.56
2	33	<b>9878-020SS</b>	<b>357.85</b>	5	1.44	2.82	0.76	3.31

^ = 40% Restock Charge  
\* = Non-Cancelable/Non-Returnable

# Schedule 80 CPVC

## Metal Union End Connectors Type 375 (316 SS)



--Available Q2 2011--  
 150 psi @ 73°F (10.3 bar @ 22.7°C)  
 Union Sold Separately

Size [inch]	P/L	Part No.	USD	Pack Qty
1/2	33	1694-375-005 *	125.34	1
3/4	33	1694-375-007 *	163.24	1
1	33	1694-375-010 *	184.64	1
1 1/4	33	1694-375-012 *	381.51	1
1 1/2	33	1694-375-015 *	397.41	1
2	33	1694-375-020 *	599.17	1



## Metal Union End Connectors (316 SS)

\*\*To be DISCONTINUED in 2012\*\*  
 150 psi @ 73°F (10.3 bar @ 22.7°C)  
 Union Sold Separately

Size [inch]	P/L	Part No.	USD	Pack Qty
1/2	33	1694-005 *	125.34	1
3/4	33	1694-007 *	163.24	1
1	33	1694-010 *	184.64	1
1 1/4	33	1694-012 *	381.51	1
1 1/2	33	1694-015 *	397.41	1
2	33	1694-020 *	599.17	1

^ = 40% Restock Charge  
 \* = Non-Cancelable/Non-Returnable

# Schedule 80 CPVC

## Schedule 80 CPVC Expansion Joints

### Expansion Joint 6" Travel (S x S)

To order SxSPG add "P" to end of part number.

To order FxF add "F" to end of part number.

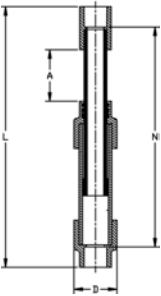


Size [inch]	P/L	EPDM Part No.	USD	FPM Part No.	USD	A [inch]	D [inch]	L [inch]	N [inch]
1/2	34	9826-005X6 *	408.56	9836-005X6 *	367.70	3.00	1.85	13.93	12.06
3/4	34	9826-007X6 *	447.07	9836-007X6 *	402.36	3.00	2.23	14.40	12.46
1	34	9826-010X6 *	483.24	9836-010X6 *	434.91	3.00	2.50	15.02	12.58
1 1/4	34	9826-012X6 *	737.16	9836-012X6 *	663.45	3.00	2.50	15.81	13.05
1 1/2	34	9826-015X6 *	553.18	9836-015X6 *	497.86	3.00	3.50	16.08	13.13
2	34	9826-020X6 *	700.95	9836-020X6 *	630.85	3.00	4.39	18.10	14.88
3	34	9826-030X6 *	966.29	9836-030X6 *	869.66	3.00	5.53	19.83	15.79
4	34	9826-040X6 *	1425.14	9836-040X6 *	1282.63	3.00	7.93	27.56	23.01
6	34	9826-060X6 *	1531.99	9836-060X6 *	1378.79	3.00	9.97	27.88	21.75

### Expansion Joint 12" Travel (S x S)

To order SxSPG add "P" to end of part number.

To order FxF add "F" to end of part number.



Size [inch]	P/L	EPDM Part No.	USD	FPM Part No.	USD	A [inch]	D [inch]	L [inch]	N [inch]
1/2	34	9826-005X12 *	416.10	9836-005X12 *	374.49	6.00	1.85	22.93	21.06
3/4	34	9826-007X12 *	477.17	9836-007X12 *	429.46	6.00	2.23	23.40	21.46
1	34	9826-010X12 *	509.03	9836-010X12 *	458.13	6.00	2.50	24.02	21.58
1 1/4	34	9826-012X12 *	806.94	9836-012X12 *	726.24	6.00	2.50	24.81	22.05
1 1/2	34	9826-015X12 *	638.95	9836-015X12 *	575.05	6.00	3.50	25.08	22.13
2	34	9826-020X12 *	815.58	9836-020X12 *	734.02	6.00	4.39	27.10	23.88
3	34	9826-030X12 *	992.27	9836-030X12 *	893.04	6.00	5.53	28.83	24.79
4	34	9826-040X12 *	1643.69	9836-040X12 *	1479.32	6.00	7.93	36.56	32.01
6	34	9826-060X12 *	1810.74	9836-060X12 *	1629.67	6.00	9.97	36.88	30.75

^ = 40% Restock Charge  
\* = Non-Cancelable/Non-Returnable

# GF Piping Systems

## CPVC Pressure Piping System Specification Submittal Data Sheet Schedule 80 24448 Pipe and Fittings

### Pipe

Pipe will be manufactured to the dimensions and tolerances of ASTM F441. The CPVC material shall be Type IV, Grade I, with a cell classification of 24448 and conform to ASTM D1784. The pipe will conform to NSF 14 & 61, CSA B137.6 (where applicable), and UPC® standards.

- CPVC Sch.80 24448 Plain End Pipe - 20 ft. Lengths

### Fittings

Socket type molded fittings will be manufactured to the dimensions and tolerances of ASTM F439. Threaded type (NPT) molded fittings will be manufactured to the dimensions and tolerances of ASTM F437 and meet the requirements of ANSI/ASME B 1.20.1. Flanges shall meet the O.D. and bolt hole patterns as specified in ANSI/ASME B 16.5. The CPVC material shall be a cell classification of 23447 and conform to ASTM D1784. The fittings will conform to NSF 14 & 61, and UPC® standards.

- CPVC Sch.80 Socket Type
- CPVC Sch.80 Threaded Type
- CPVC Sch.80 Flange Type

Job Name: \_\_\_\_\_

Job Location: \_\_\_\_\_

Engineer: \_\_\_\_\_

Contractor: \_\_\_\_\_

Representative: \_\_\_\_\_



**GEORG FISCHER**  
PIPING SYSTEMS