

Section 4

**Clear PVC
Piping System**

Effective August 27, 2012



PD801557



GEORG FISCHER
PIPING SYSTEMS

Prices effective 8/27/12. See www.gfpiping.com for updated information.



The technical information given in this publication implies no warranty of any kind and is subject to change without notice. Please consult our Terms and Conditions of Sale.

For complete technical information, please consult the GF Harvel Engineering and Installation Guide available online at www.gfpiping.com/resource.html [see "Technical Docs"] or by calling (800) 854-4090.

For more information about any of our product lines, please call (800) 854-4090.

P0801557

Clear PVC Piping Systems

	Page
	4.5
	4.7

Specifications and Standards

Specifications and Standards

NSF/ANSI Standard 61

FDA Title 21

- ASTM D 1784 : PVC Material, Clear, Cell Classification 12454
- ASTM D 1785 : PVC Schedule 40 & Schedule 80 Pipe Dimensions
- ASTM D 2672 : PVC Schedule 40 Tapered Sockets for Bell End Pipe
- ASTM D 2466 : PVC Schedule 40 Socket & Threaded Fittings
- ASTM D 2467 : PVC Schedule 80 Socket & Threaded Fittings
- ANSI B1.20.1 : PVC Schedule 80 NPT Threads

Molded Dimension Tolerances

- A Piston Position; Expansion Joints : ± 0.03
- D Outside Diameter : ± 0.06
- G, G1 Intersections of centerlines to bottom of socket; 90° Ells, Tees : up to 4" ± 0.03 ; 6" and above ± 0.06
- GJ, GN Intersections of centerlines to bottom of socket; 45° Wyes : up to 4" ± 0.03 ; 6" and above ± 0.06
- H, HJ, HN Intersections of centerlines to face of fitting; 90° Ells, 45° Ells, Tees, 45° Wyes : up to 4" ± 0.03 ; 6" and above ± 0.06
- HL Socket Bottom to Face of Fitting : up to 4" ± 0.03 ; 6" and above ± 0.06
- J Intersections of centerlines to bottom of socket; 45° & 30° Ells : up to 4" ± 0.03 ; 6" and above ± 0.06
- L Overall Length of fitting : ± 0.06
- N Socket Bottom to Socket Bottom; Couplings, Unions : ± 0.06
- N1 Socket Bottom to Face of Flange : ± 0.06
- R Thickness on Plugs, Flanges : ± 0.03
- T, T1 Effective Thread Length : Reference Only
- W Height of Cap : ± 0.06

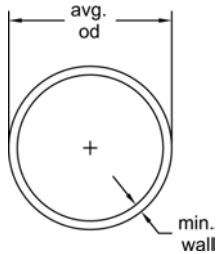
Clear PVC Piping Systems

Harvel® Clear PVC Pressure Pipe

Schedule 40 Clear PVC - 10 ft lengths

Max Water Pressure at 73°F (22.7°C) with solvent-cemented joints

Belled-end pipe available upon request



Size [inch]	Part No.	USD
1/4	H0400025PL1000 *	Call
3/8	H0400038PL1000 *	Call
1/2	H0400050PL1000 *	Call
3/4	H0400075PL1000 *	Call
1	H0400100PL1000 *	Call
1 1/4	H0400125PL1000 *	Call
1-1/2	H0400150PL1000 *	Call
2	H0400200PL1000 *	Call
2 1/2	H0400250PL1000 *	Call
3	H0400300PL1000 *	Call
3 1/2	H0400350PL1000 *	Call
4	H0400400PL1000 *	Call
5	H0400500PL1000 *	Call
6	H0400600PL1000 *	Call
6 x 1/8	H0400613PL1000 *	Call
8	H0400800PL1000 *	Call
10	H0401000PL1000 *	Call
12	H0401200PL1000 *	Call

Size [inch]	Lift Qty [ft]	Average O.D. [inch]	Average I.D. [inch]	Min. Wall [inch]	Wt/Ft [lb/ft]	Max Water Pressure [psi]
1/4		0.540	0.354	0.088	0.081	390
3/8		0.675	0.483	0.091	0.109	310
1/2	5700	0.840	0.608	0.109	0.161	300
3/4	5260	1.050	0.810	0.113	0.214	240
1	4280	1.315	1.033	0.133	0.315	220
1 1/4	2360	1.660	1.364	0.140	0.426	180
1-1/2	2060	1.900	1.592	0.145	0.509	170
2	1660	2.375	2.049	0.154	0.682	140
2 1/2	1080	2.875	2.445	0.203	1.076	150
3	840	3.500	3.042	0.216	1.409	130
3 1/2	520	4.000	3.520	0.226	1.697	120
4	400	4.500	3.998	0.237	2.006	110
5	340	5.563	5.017	0.258	2.726	95
6	220	6.625	6.031	0.280	3.535	90
6 x 1/8	220	6.625	6.355	0.110	1.530	45
8	140	8.625	7.943	0.322	5.305	80
10	100	10.750	9.976	0.365	7.532	70
12	100	12.750	11.890	0.406	9.949	70

^ = 40% Restock Charge

* = Non-Cancelable/Non-Returnable

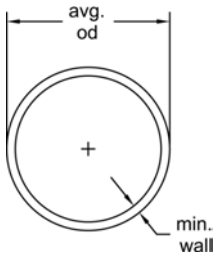
+GF+

Prices effective 8/27/12. See www.gfpiping.com for updated information.

Clear PVC Piping Systems

Schedule 80 Clear PVC - 10 ft lengths

Max Water Pressure at 73°F (22.7°C) with solvent-cemented joints
 Belled-end pipe available upon request



Size [inch]	Part No.	USD
1/4	H0800025PL1000 *	Call
3/8	H0800038PL1000 *	Call
1/2	H0800050PL1000 *	Call
3/4	H0800075PL1000 *	Call
1	H0800100PL1000 *	Call
1 1/4	H0800125PL1000 *	Call
1 1/2	H0800150PL1000 *	Call
2	H0800200PL1000 *	Call
2 1/2	H0800250PL1000 *	Call
3	H0800300PL1000 *	Call
4	H0800400PL1000 *	Call
6	H0800600PL1000 *	Call

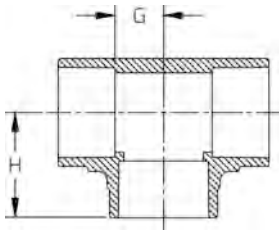
Size [inch]	Lift Qty [ft]	Average O.D. [inch]	Average I.D. [inch]	Min. Wall [inch]	Wt/Ft [lb/ft]	Max Water Pressure [psi]
1/4		0.540	0.288	0.119	0.100	570
3/8		0.675	0.407	0.126	0.138	460
1/2	5700	0.840	0.528	0.147	0.202	420
3/4	5260	1.050	0.724	0.154	0.273	340
1	4280	1.315	0.935	0.179	0.402	320
1 1/4	2360	1.660	1.256	0.191	0.554	260
1 1/2	2060	1.900	1.476	0.200	0.673	240
2	1660	2.375	1.913	0.218	0.932	200
2 1/2	1080	2.875	2.289	0.276	1.419	210
3	840	3.500	2.864	0.300	1.903	190
4	400	4.500	3.786	0.337	2.782	160
6	220	6.625	5.709	0.432	5.313	140

^ = 40% Restock Charge
 * = Non-Cancelable/Non-Returnable

Clear PVC Piping Systems

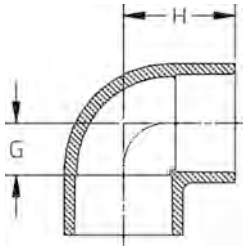
Clear PVC Fittings

Tee (S x S x S)



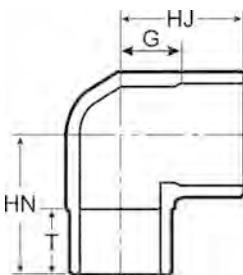
Size	P/L	Part No.	USD	Pack Qty	H [inch]	G [inch]	
¼	35	H401002L	11.30	10	0.92	0.29	
⅜	35	H401003L	11.30	10	1.16	0.40	
½	35	H401005L	8.50	25	1.49	0.50	
¾	35	H401007L	9.70	25	1.61	0.56	
1	35	H401010L	18.17	25	1.86	0.72	
1 ¼	35	H401012L	28.56	10	2.19	0.91	
1 ½	35	H401015L	34.64	10	2.44	1.06	
2	35	H401020L	50.33	10	2.78	1.29	
2 ½	35	H401025L	165.90	5	3.33	1.50	
3	35	H401030L	217.58	5	3.75	1.85	
4	35	H401040L	393.89	5	4.63	2.38	
6	35	H401060L	709.01	2	6.63	3.55	
8	35	H401080L	1276.21	1	8.70	4.59	

90° Ell (S x S)



Size [inch]	P/L	Part No.	USD	Pack Qty	H [inch]	G [inch]	
¼	35	H406002L	9.19	10	0.95	0.33	
⅜	35	H406003L	9.19	10	1.17	0.41	
½	35	H406005L	6.94	25	1.41	0.50	
¾	35	H406007L	7.59	25	1.61	0.56	
1	35	H406010L	13.77	25	1.86	0.69	
1 ¼	35	H406012L	24.26	10	2.16	0.91	
1 ½	35	H406015L	25.77	10	2.41	1.03	
2	35	H406020L	40.84	10	2.78	1.28	
2 ½	35	H406025L	123.92	5	3.29	1.53	
3	35	H406030L	148.28	5	3.75	1.85	
4	35	H406040L	265.48	5	4.60	2.34	
6	35	H406060L	477.87	2	6.70	3.69	
8	35	H406080L	860.15	1	8.67	4.59	

90° Street Ell (SPG x S)



Size	P/L	Part No.	USD	Pack Qty	HJ [inch]	HN [inch]	G [inch]	T [inch]
½	35	H409005L	6.94	25	1.43	1.66	0.43	0.84
¾	35	H409007L	7.59	25	1.68	1.84	0.68	0.94
1	35	H409010L	13.77	25	2.00	2.22	0.75	1.16
1 ¼	35	H409012L	24.26	10	2.25	2.59	0.81	1.31
1 ½	35	H409015L	25.77	10	2.56	13.31	1.18	11.88
2	35	H409020L	40.84	10	2.96	3.25	3.25	1.50
2 ½	35	H409025L	123.92	5	3.37	4.50	4.50	2.00

^ = 40% Restock Charge

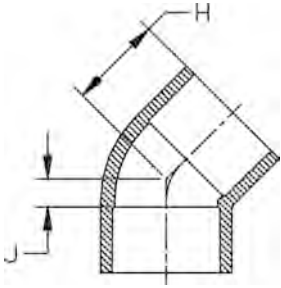
* = Non-Cancelable/Non-Returnable

+GF+

Prices effective 8/27/12. See www.gfpiping.com for updated information.

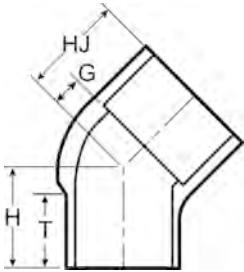
Clear PVC Piping Systems

45° EII (S x S)



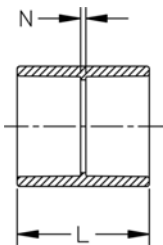
Size [inch]	P/L	Part No.	USD	Pack Qty	H [inch]	J [inch]
¼	35	H417002L	14.74	10	0.81	0.13
⅜	35	H417003L	14.74	10	0.94	0.19
½	35	H417005L	11.20	25	1.21	0.25
¾	35	H417007L	17.28	25	1.32	0.33
1	35	H417010L	20.78	25	1.47	0.29
1 ¼	35	H417012L	29.38	10	1.70	0.40
1 ½	35	H417015L	36.63	10	1.88	0.44
2	35	H417020L	47.75	10	2.16	0.60
2 ½	35	H417025L	124.09	5	2.53	0.76
3	35	H417030L	192.64	5	2.66	0.78
4	35	H417040L	346.02	5	3.24	0.95
6	35	H417060L	622.81	2	4.81	1.74
8	35	H417080L	1121.06	1	6.11	2.02

45° Street EII (SPG x S)



Size [inch]	P/L	Part No.	USD	Pack Qty	HJ [inch]	H [inch]	G [inch]	T [inch]
½	35	H427005L	11.20	25	1.31	1.28	0.43	0.93
¾	35	H427007L	17.28	25	1.50	1.50	0.50	1.06
1	35	H427010L	20.78	25	1.68	1.59	0.59	1.18
1 ¼	35	H427012L	29.38	10	1.90	1.78	0.65	1.28
1 ½	35	H427015L	36.63	10	2.12	2.03	0.78	1.43
2	35	H427020L	47.75	10	2.34	2.31	0.37	1.62
2 ½	35	H427025L	124.09	5	2.56	3.68	0.81	2.00
3	35	H427030L	192.64	5	2.81	3.25	0.90	2.06
4	35	H427040L	346.02	5	3.81	3.81	1.56	2.53

Coupling (S x S)

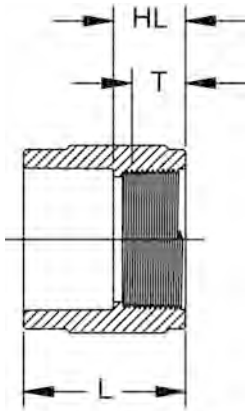


Size [inch]	P/L	Part No.	USD	Pack Qty	L [inch]	N [inch]
¼	35	H429002L	10.20	10	1.37	0.06
⅜	35	H429003L	14.95	10	1.62	0.18
½	35	H429005L	23.30	25	1.59	0.09
¾	35	H429007L	80.11	25	2.09	0.09
1	35	H429010L	115.65	25	2.34	0.09
1 ¼	35	H429012L	208.19	10	2.59	0.09
1 ½	35	H429015L	15.73	10	2.68	0.12
2	35	H429020L	24.53	10	2.84	0.09
2 ½	35	H429025L	53.75	5	4.15	0.15
3	35	H429030L	84.32	5	4.03	0.03
4	35	H429040L	141.74	5	4.25	0.25
6	35	H429060L	219.15	2	7.18	0.25
8	35	H429080L	394.44	2	9.18	0.43

^ = 40% Restock Charge
* = Non-Cancelable/Non-Returnable

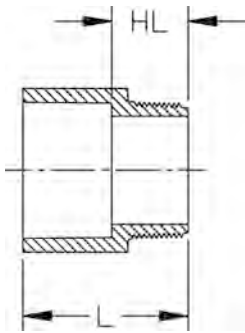
Clear PVC Piping Systems

Female Adapter (S x FPT)



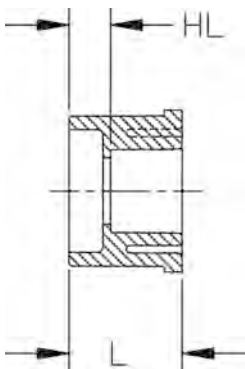
Size [inch]	P/L	Part No.	USD	Pack Qty	HL [inch]	L [inch]	T [inch]
¼	35	H435002SRL	12.96	10	0.75	1.43	0.40
⅜	35	H435003SRL	12.96	10	0.75	1.55	0.41
½	35	H435005SRL	7.67	25	0.91	1.79	0.53
¾	35	H435007SRL	9.61	25	0.95	1.96	0.55
1	35	H435010SRL	11.09	25	1.11	2.26	0.68
1 ¼	35	H435012SRL	17.04	10	1.16	2.44	0.71
1 ½	35	H435015SRL	19.98	10	1.19	2.58	0.72
2	35	H435020SRL	26.93	10	1.23	2.74	0.76
2 ½	35	H435025SRL	55.94	5	1.75	3.50	1.14
3	35	H435030SRL	91.33	5	1.91	3.82	1.20
4	35	H435040SRL	151.07	5	2.02	4.29	1.30

Male Adapter (S x MPT)



Size [inch]	P/L	Part No.	USD	Pack Qty	HL [inch]	L [inch]
½	35	H436005L	6.18	25	0.93	1.86
¾	35	H436007L	6.94	25	1.00	2.04
1	35	H436010L	12.19	25	1.21	2.39
1 ¼	35	H436012L	14.69	10	1.29	2.56
1 ½	35	H436015L	19.97	10	1.32	2.72
2	35	H436020L	26.04	10	1.35	2.88
2 ½	35	H436025L	77.25	5	1.87	3.68
3	35	H436030L	112.83	5	2.02	3.92
4	35	H436040L	143.91	5	2.08	4.40

Flush Style Reducer Bushing (SPG x S)



Size [inch]	P/L	Part No.	USD	Pack Qty	HL [inch]	L [inch]
¾ x ½	35	H437101L	7.14	25	0.40	1.29
1 x ¾	35	H437131L	13.13	25	0.44	1.42
1 ¼ x 1	35	H437168L	17.28	25	0.42	1.57
1 ½ x 1	35	H437211L	18.26	25	0.55	1.68
1 ½ x 1 ¼	35	H437212L	18.26	25	0.42	1.70
2 x 1 ½	35	H437251L	30.24	10	0.40	1.80
2 ½ x 2	35	H437292L	48.64	5	0.55	2.13
3 x 2	35	H437338L	72.16	5	0.87	2.43
3 x 2 ½	35	H437339L	72.16	5	0.39	2.23
4 x 2	35	H437420L	161.25	5	1.15	2.72
4 x 3	35	H437422L	161.25	5	0.77	2.76
6 x 4	35	H437532L	324.50	2	1.13	3.66
8 x 6	35	H437585L	522.47	2	1.56	4.66

^ = 40% Restock Charge

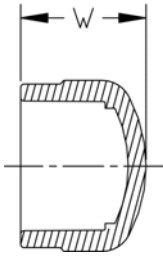
* = Non-Cancelable/Non-Returnable

+GF+

Prices effective 8/27/12. See www.gfpiping.com for updated information.

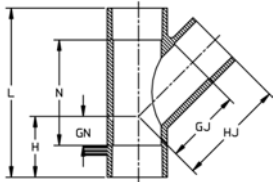
Clear PVC Piping Systems

Cap (S)



Size [inch]	P/L	Part No.	USD	Pack Qty	W [inch]
¼	35	H447002L	8.28	10	0.95
⅜	35	H447003L	8.28	10	1.09
½	35	H447005L	6.18	25	1.29
¾	35	H447007L	7.14	25	1.46
1	35	H447010L	11.31	25	1.67
1 ¼	35	H447012L	15.73	10	1.88
1 ½	35	H447015L	17.28	10	2.09
2	35	H447020L	20.84	10	2.32
2 ½	35	H447025L	66.69	5	2.73
3	35	H447030L	65.64	5	3.05
4	35	H447040L	149.31	5	3.67
6	35	H447060L	268.75	2	4.96
8	35	H447080L	483.75	2	6.29

45° Wye (S x S x S)



Size	P/L	Part No.	USD	Pack Qty	GJ [inch]	GN [inch]	H [inch]	HJ [inch]	L [inch]	N [inch]	Design
1 1/2	35	H475015L	45.67	20	2.41	0.69	2.06	3.75	5.81	3.06	SL
2	35	H475020L	67.24	10	3.61	1.38	2.89	5.16	8.05	5.00	SL
3	35	H475030L	280.04	4	4.85	1.91	3.81	6.75	10.46	6.65	SL
4	35	H475040L	509.85	4	6.38	1.84	4.20	8.75	12.96	8.25	SL
6	35	H475060L	871.63	2	8.50	1.81	4.86	11.59	16.50	10.39	HS
6 x 4	35	H475532L	871.63	2	7.18	1.87	4.91	9.45	16.50	10.39	HS

^ = 40% Restock Charge
 * = Non-Cancelable/Non-Returnable