

Section 11

Contain-It™ Secondary Containment Piping System



Glossary

| | | |
|-----|---|--|
| S | = | Contain-It™ Socket |
| SPG | = | Spigot End (same dimension as pipe outside diameter) |
| MPT | = | Male Pipe Thread |
| FPT | = | Female Pipe Thread |

Product Line Description

| | |
|----|-------------|
| 39 | Fittings |
| 41 | Pipe |
| 42 | Accessories |








The technical information given in this publication implies no warranty of any kind and is subject to change without notice. Please consult our Terms and Conditions of Sale.

Not for Use with Compressed Air or Gases

DO NOT TEST with Air or Air over Water

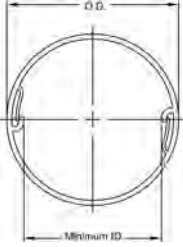
GF Piping DOES NOT RECOMMEND the use of thermoplastic piping products for systems to transport or store compressed air or gases, or the testing of thermoplastic piping systems with compressed air or gases in above or below ground locations. The use of GF Piping products in compressed air or gas systems automatically voids the warranty for such products, and their use against our recommendation is entirely the responsibility and liability of the installer. GF Piping will not accept responsibility for damage or impairment from its products, or other consequential or incidental damages caused by misapplication, incorrect assembly, and/or exposure to harmful substances or conditions. The only exception to this recommendation is when testing the Contain-It™ Secondary System or the Fuseal Squared™ Double Containment Piping System's containment joints.

Table of contents

| | | Page |
|---|-------------------------|------|
|  | Contain-It Pipe | 364 |
|  | Contain-It Fittings | 365 |
|  | Contain-It Valve Box | 369 |
| | Contain-It Flange Box | 370 |
|  | Contain-It Terminations | 371 |
|  | Contain-It Centralizers | 373 |
|  | Contain-It Accessories | 374 |
|  | Leak Detection | 376 |

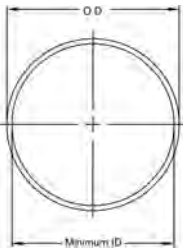
Contain-It Pipe

Split Pipe



| Size [inch] | Lift Qty [ft] | lengths [ft] | Part No. | USD | Minimum Order Qty [ft] | O.D. [inch] | Minimum I.D. [inch] |
|----------------|------------------|-----------------|-------------|-------|------------------------------|----------------|------------------------|
| 3 | 480 | 10 | 37L015030 * | 21.82 | 80 | 3.548 | 2.743 |
| 4 | 360 | 10 | 37L015040 * | 22.50 | 60 | 4.215 | 3.525 |
| 6 | 120 | 10 | 37L015060 * | 47.01 | 20 | 6.275 | 5.375 |

Solid Pipe



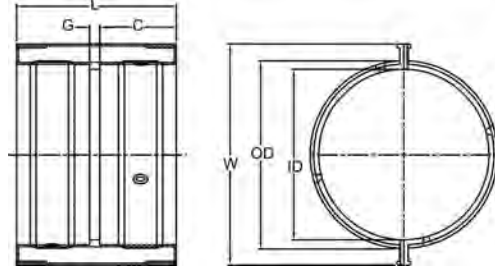
| Size [inch] | Lift Qty [ft] | lengths [ft] | Part No. | USD | Minimum Order Qty [ft] | O.D. [inch] | Minimum I.D. [inch] |
|----------------|------------------|-----------------|-------------|-------|------------------------------|----------------|------------------------|
| 3 | 700 | 20 | 37L026030 * | 12.37 | 120 | 3.548 | 3.248 |
| 4 | 520 | 20 | 37L026040 * | 12.76 | 80 | 4.215 | 3.882 |
| 6 | 340 | 20 | 37L026060 * | 26.86 | 40 | 6.275 | 5.782 |

Contain-It Fittings

Containment Coupling - Standard, Split (S x S)



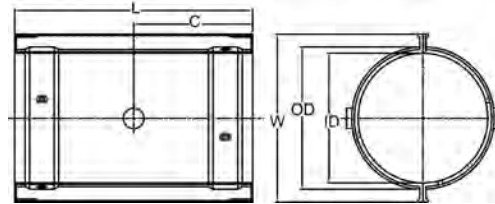
| Size [inch] | Part No. | USD | Pack Qty | C [inch] | G [inch] | L [inch] | W [inch] | O.D. [inch] | I.D. [inch] |
|-------------|-----------------|---------------|----------|----------|----------|----------|----------|-------------|-------------|
| 3 | 4629-030 | 86.00 | 5 | 2.00 | 0.38 | 4.38 | 5.04 | 3.96 | 3.55 |
| 4 | 4629-040 | 88.58 | 5 | 2.00 | 0.38 | 4.38 | 5.81 | 4.69 | 3.88 |
| 6 | 4629-060 | 132.86 | 5 | 2.75 | 0.38 | 5.81 | 8.19 | 6.88 | 5.97 |



Containment Coupling - Extended, Split (S x S)

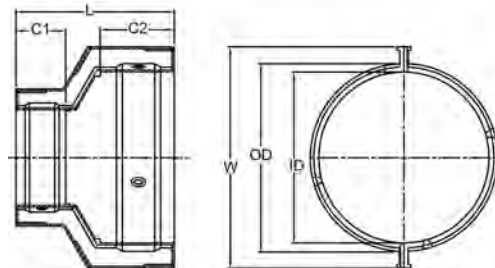
Maximum Gap: 5.50"

| Size [inch] | Part No. | USD | Pack Qty | C [inch] | L [inch] | W [inch] | O.D. [inch] | I.D. [inch] |
|-------------|------------------|---------------|----------|----------|----------|----------|-------------|-------------|
| 3 | 4629-030E | 95.12 | 5 | 4.50 | 9.00 | 5.04 | 3.96 | 3.55 |
| 4 | 4629-040E | 98.06 | 5 | 5.00 | 10.00 | 5.81 | 4.69 | 3.88 |
| 6 | 4629-060E | 141.04 | 5 | 5.75 | 11.50 | 8.19 | 6.88 | 5.97 |



Containment Coupling - Reducing, Split (S x S)

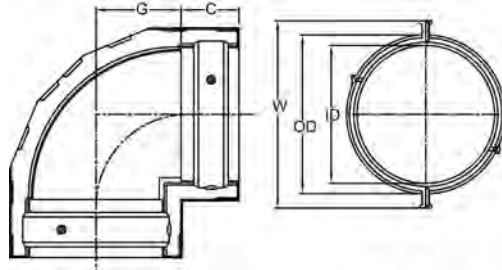
| Size [inch] | Part No. | USD | Pack Qty | C1 [inch] | C2 [inch] | L [inch] | W [inch] | O.D. [inch] | I.D. [inch] |
|-------------|-----------------|---------------|----------|-----------|-----------|----------|----------|-------------|-------------|
| 6 x 4 | 4629-532 | 177.31 | 5 | 2.00 | 2.75 | 5.81 | 8.19 | 6.88 | 5.97 |





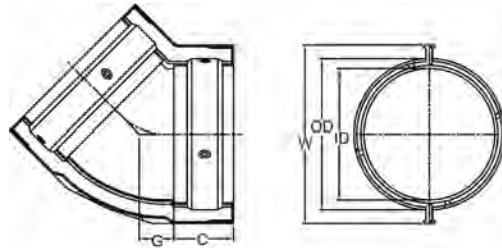
Containment 90° Ell, Split (SxS)

| Size [inch] | Part No. | USD | Pack Qty | C [inch] | G [inch] | W [inch] | O.D. [inch] | I.D. [inch] | |
|-------------|-----------------|---------------|----------|----------|----------|----------|-------------|-------------|--|
| 3 | 4606-030 | 112.05 | 5 | 2.00 | 2.44 | 5.81 | 4.69 | 3.88 | |
| 4 | 4606-040 | 115.52 | 5 | 2.00 | 2.44 | 5.81 | 4.69 | 3.88 | |
| 6 | 4606-060 | 177.31 | 5 | 2.75 | 3.38 | 8.19 | 6.88 | 5.97 | |



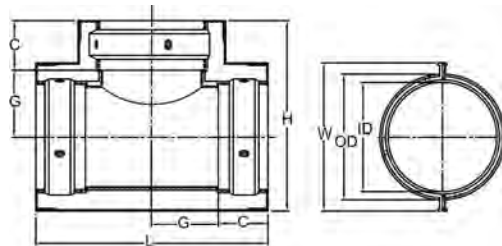
Containment 45° Ell, Split (S x S)

| Size [inch] | Part No. | USD | Pack Qty | C [inch] | G [inch] | W [inch] | O.D. [inch] | I.D. [inch] | |
|-------------|-----------------|---------------|----------|----------|----------|----------|-------------|-------------|--|
| 3 | 4617-030 | 112.05 | 5 | 2.00 | 2.00 | 5.04 | 3.96 | 3.55 | |
| 4 | 4617-040 | 115.52 | 5 | 2.00 | 1.00 | 5.81 | 4.69 | 3.88 | |
| 6 | 4617-060 | 177.31 | 5 | 2.75 | 1.75 | 8.19 | 6.88 | 5.97 | |



Containment Tee, Split (S x S x S)

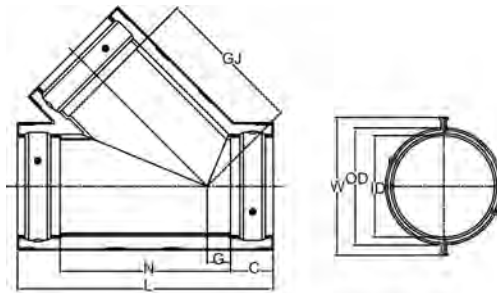
| Part No. | USD | Size [inch] | C [inch] | G [inch] | H [inch] | L [inch] | W [inch] | O.D. [inch] | I.D. [inch] | Pack Qty |
|-----------------|---------------|-------------|----------|----------|----------|----------|----------|-------------|-------------|----------|
| 4601-030 | 130.30 | 3 | 2.00 | 2 | 6.52 | 8 | 5 | 4 | 4 | 5 |
| 4601-040 | 134.33 | 4 | 2.00 | 2 | 7.19 | 9 | 6 | 5 | 4 | 5 |
| 4601-060 | 194.78 | 6 | 2.75 | 3 | 10.25 | 12 | 8 | 7 | 6 | 5 |





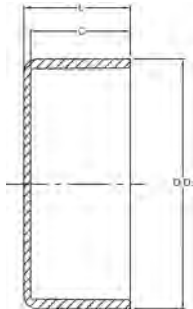
Containment 45° Wye, Split (S x S x S)

| Size [inch] | Part No. | USD | Pack Qty | C [inch] | G [inch] | GJ [inch] | L [inch] | N [inch] | W [inch] | O.D. [inch] | I.D. [inch] |
|-------------|-----------------|---------------|----------|----------|----------|-----------|----------|----------|----------|-------------|-------------|
| 4 | 4683-040 | 177.31 | 5 | 2.00 | 0.75 | 5.88 | 11.00 | 7.13 | 5.81 | 4.69 | 3.88 |
| 6 | 4683-060 | 255.23 | 5 | 2.75 | 1.81 | 7.75 | 15.19 | 9.75 | 8.19 | 6.88 | 5.97 |



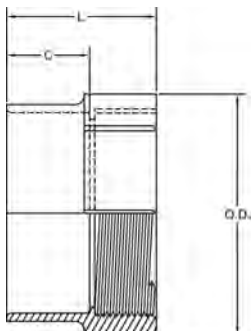
Containment Cap, One Piece (S)

| Size [inch] | Part No. | USD | Pack Qty | C [inch] | L [inch] | O.D. [inch] |
|-------------|-----------------|---------------|----------|----------|----------|-------------|
| 4 | 4647-040 | 72.54 | 5 | 1.75 | 1.94 | 4.50 |
| 6 | 4647-060 | 106.12 | 5 | 2.75 | 3.19 | 6.75 |



Containment Female Adapter, One Piece (S x FPT)

| Size [inch] | Part No. | USD | Pack Qty | C [inch] | L [inch] | O.D. [inch] |
|-------------|-----------------|---------------|----------|----------|----------|-------------|
| 4 | 4635-040 | 88.66 | 5 | 1.75 | 3.18 | 5.00 |
| 6 | 4635-060 | 134.33 | 5 | 3.00 | 5.00 | 6.75 |





Plug, One Piece (MPT)

| Size [inch] | Part No. | USD | Pack Qty |
|-------------|-----------------|---------------|----------|
| 4 | 4650-040 | 72.54 | 5 |
| 6 | 4650-060 | 106.12 | 5 |



Adapter Sleeve, One Piece (IPS Spg x S)

| Size [inch] | Part No. | USD | Pack Qty |
|-------------|-----------------|---------------|----------|
| 3 x 3 | 4687-030 | 68.25 | 10 |
| 4 x 4 | 4687-040 | 72.54 | 10 |
| 6 x 6 | 4687-060 | 106.12 | 10 |



Containment PPR Floor Drain, One Piece (IPS Spg x MPT)

For use with Fuseal primary piping only.
Must use 4635-060 for Contain-It transition.

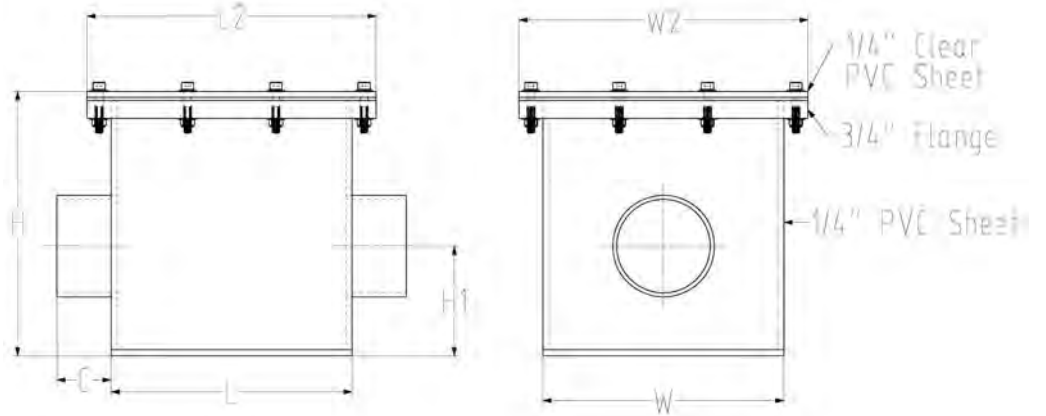
| Size [inch] | Part No. | USD |
|-------------|--------------------|---------------|
| 3 x 6 | 46104-530 * | 913.42 |
| 4 x 6 | 46104-532 * | 913.42 |

Contain-It Valve Box

Valve Box



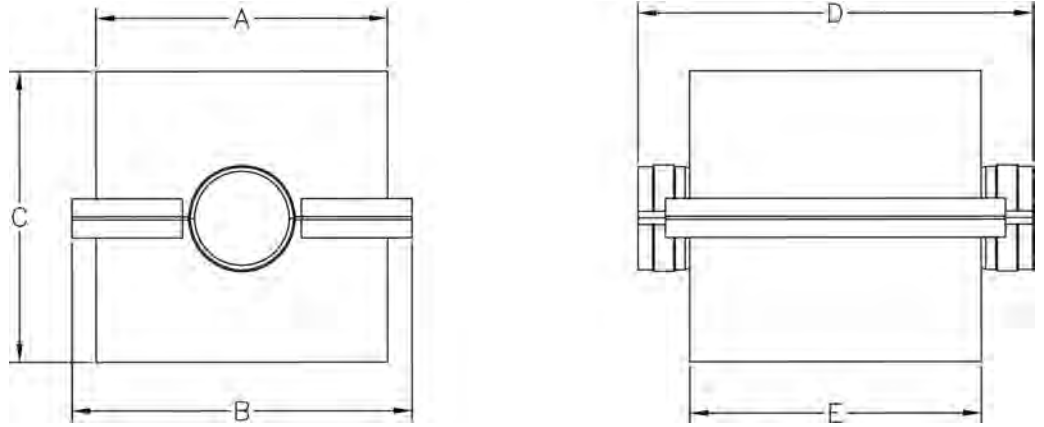
| | Part No. | USD | Size [inch] | W [inch] | H [inch] | H1 [inch] | C [inch] | L [inch] | L2 [inch] | W2 [inch] | |
|---|-------------|----------|----------------|-------------|-------------|--------------|-------------|-------------|--------------|--------------|--|
| * | 150 991 104 | 802.84 | 3 | 10 | 8 | 3.46 | 2.25 | 8 | 10 | 8 | |
| * | 150 991 105 | 941.53 | 4 | 10 | 11 | 4.56 | 2.25 | 10 | 12 | 12 | |
| * | 150 991 106 | 1,539.85 | 6 | 18 | 15 | 6.17 | 3.00 | 18 | 20 | 20 | |



Contain-It Flange Box

Flange Box

| Part No. | USD | Size [inch] | A [inch] | B [inch] | C [inch] | D [inch] | E [inch] |
|---------------|--------|----------------|-------------|-------------|-------------|-------------|-------------|
| 150 991 100 * | 559.49 | 3 | 10 | 12 | 10 | 14.3 | 10 |
| 150 991 101 * | 779.64 | 4 | 12 | 14 | 12 | 16.3 | 12 |
| 150 991 102 * | 996.56 | 6 | 12 | 14 | 12 | 17.8 | 12 |

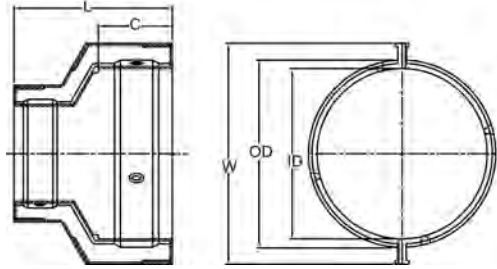


Contain-It Terminations



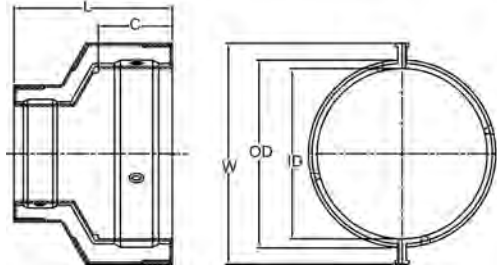
Termination Fitting - Rigid PVC, Split (S to IPS)

| Size [inch] | Part No. | USD | C [inch] | L [inch] | W [inch] | O.D. [inch] | I.D. [inch] |
|----------------|-------------------|---------------|-------------|-------------|-------------|----------------|----------------|
| 4 x 1/2 | 4628-415 * | 149.10 | 2.00 | 4.44 | 5.81 | 4.69 | 3.88 |
| 4 x 3/4 | 4628-416 * | 149.10 | 2.00 | 4.44 | 5.81 | 4.69 | 3.88 |
| 4 x 1 | 4628-417 * | 149.10 | 2.00 | 4.44 | 5.81 | 4.69 | 3.88 |
| 4 x 1 1/4 | 4628-418 | 149.10 | 2.00 | 4.44 | 5.81 | 4.69 | 3.88 |
| 4 x 1 1/2 | 4628-419 | 149.10 | 2.00 | 4.44 | 5.81 | 4.69 | 3.88 |
| 4 x 2 | 4628-420 | 149.10 | 2.00 | 4.44 | 5.81 | 4.69 | 3.88 |
| 6 x 2 1/2 | 4628-529 * | 214.93 | 2.75 | 5.81 | 8.19 | 6.88 | 5.97 |
| 6 x 3 | 4628-530 | 214.93 | 2.75 | 5.81 | 8.19 | 6.88 | 5.97 |
| 6 x 4 | 4628-532 | 214.93 | 2.75 | 5.81 | 8.19 | 6.88 | 5.97 |



Test Termination Fitting - Rigid PVC, Split (S to IPS)

| Size [inch] | Part No. | USD | C [inch] | L [inch] | W [inch] | O.D. [inch] | I.D. [inch] |
|----------------|------------------|---------------|-------------|-------------|-------------|----------------|----------------|
| 4 x 2 | 4628-420T | 155.82 | 2.00 | 4.44 | 5.81 | 4.69 | 3.88 |
| 6 x 4 | 4628-532T | 221.64 | 2.75 | 5.81 | 8.19 | 6.88 | 5.97 |



Termination Fitting - Flexible Alcryn, One Piece

Contain-It to IPS/Metric

| Size [inch] | Size | Part No. | USD |
|----------------|------|------------------|---------------|
| 3 x 1 | 32 | 4628-335A | 86.00 |
| 3 x 2 | 63 | 4628-338A | 86.00 |
| 4 x 1/2 | 20 | 4628-415A | 88.66 |
| 4 x 3/4 | 25 | 4628-416A | 88.66 |
| 4 x 1 | 32 | 4628-417A | 88.66 |
| 4 x 1 1/4 | 40 | 4628-418A | 88.66 |
| 4 x 1 1/2 | 50 | 4628-419A | 88.66 |
| 4 x 2 | 63 | 4628-420A | 88.66 |
| 6 x 2 1/2 | 75 | 4628-529A | 261.94 |
| 6 x 3 | 90 | 4628-530A | 261.94 |
| 6 x 4 | 110 | 4628-532A | 261.94 |



Test Termination Fitting - Flexible Alcryn, One Piece

Contain-It to IPS/Metric

| Size [inch] | Size | Part No. | USD |
|----------------|------|------------|--------|
| 3 x 1 | 32 | 4628-335AT | 92.50 |
| 3 x 2 | 63 | 4628-338AT | 92.50 |
| 4 x 1/2 | 20 | 4628-415AT | 95.37 |
| 4 x 3/4 | 25 | 4628-416AT | 95.37 |
| 4 x 1 | 32 | 4628-417AT | 95.37 |
| 4 x 1 1/4 | 40 | 4628-418AT | 95.37 |
| 4 x 1 1/2 | 50 | 4628-419AT | 95.37 |
| 4 x 2 | 63 | 4628-420AT | 95.37 |
| 6 x 2 1/2 | 75 | 4628-529AT | 268.65 |
| 6 x 3 | 90 | 4628-530AT | 268.65 |
| 6 x 4 | 110 | 4628-532AT | 268.65 |



Termination Fitting - Flexible Alcryn, One Piece

Contain-It to Copper Tube Size

| Size [inch] | Part No. | USD |
|----------------|------------|--------|
| 4 x 1/2 | 4628-415AC | 88.66 |
| 4 x 3/4 | 4628-416AC | 88.66 |
| 4 x 1 | 4628-417AC | 88.66 |
| 4 x 1 1/4 | 4628-418AC | 88.66 |
| 4 x 1 1/2 | 4628-419AC | 88.66 |
| 4 x 2 | 4628-420AC | 88.66 |
| 6 x 2 | 4628-528AC | 235.75 |
| 6 x 2 1/2 | 4628-529AC | 261.94 |
| 6 x 3 | 4628-530AC | 261.94 |
| 6 x 4 | 4628-532AC | 261.94 |



Test Termination Fitting - Flexible Alcryn, One Piece

Contain-It to Copper Tube Size

| Size [inch] | Part No. | USD |
|----------------|-------------|--------|
| 4 x 1/2 | 4628-415ATC | 95.37 |
| 4 x 3/4 | 4628-416ATC | 95.37 |
| 4 x 1 | 4628-417ATC | 95.37 |
| 4 x 1 1/4 | 4628-418ATC | 95.37 |
| 4 x 1 1/2 | 4628-419ATC | 95.37 |
| 4 x 2 | 4628-420ATC | 95.37 |
| 6 x 2 | 4628-528ATC | 241.79 |
| 6 x 2 1/2 | 4628-529ATC | 268.65 |
| 6 x 3 | 4628-530ATC | 268.65 |
| 6 x 4 | 4628-532ATC | 268.65 |

Contain-It Centralizers

Centralizer (Contain-It x IPS)



| Size [inch] | d [inch] | Part No. | USD | Pack Qty |
|----------------|-------------|-------------------|---------------|----------|
| 3 x 1 | | 4686-335 | 19.54 | 25 |
| 3 x 2 | | 4686-338 * | 19.54 | 25 |
| 4 x ½ | | 4686-415 * | 45.68 | 25 |
| 4 x ¾ | | 4686-416 * | 45.68 | 25 |
| 4 x 1 | | 4686-417 * | 20.15 | 25 |
| 4 x 1 ¼ | | 4686-418 * | 45.68 | 25 |
| 4 x 1 ½ | | 4686-419 * | 20.15 | 25 |
| 4 x 2 | | 4686-420 * | 20.15 | 25 |
| 6 x 2 ½ | | 4686-529 * | 61.79 | 25 |
| 6 x 3 | | 4686-530 * | 26.86 | 25 |
| 6 x 4 | | 4686-532 * | 26.86 | 25 |
| 6 x ½ | Twin | 4686-811 * | 149.10 | 5 |
| 6 x ¾ | Twin | 4686-813 * | 149.10 | 5 |
| 6 x 1 | Twin | 4686-815 * | 149.10 | 5 |

Centralizer (Contain-It x Copper Tube Size)



| Size [inch] | Part No. | USD | Pack Qty |
|----------------|--------------------|--------------|----------|
| 4 x ½ | 4686-415C * | 45.68 | 10 |
| 4 x ¾ | 4686-416C * | 45.68 | 10 |
| 4 x 1 | 4686-417C * | 45.68 | 10 |
| 4 x 1 ¼ | 4686-418C * | 45.68 | 10 |
| 4 x 1 ½ | 4686-419C * | 45.68 | 10 |
| 4 x 2 | 4686-420C * | 45.68 | 10 |
| 6 x 2 | 4686-528C * | 61.79 | 10 |
| 6 x 2 ½ | 4686-529C * | 61.79 | 10 |
| 6 x 3 | 4686-530C * | 61.79 | 10 |
| 6 x 4 | 4686-532C * | 61.79 | 10 |

Centralizer (Contain-It x Metric)



| Size [inch] | d [inch] | Part No. | USD | Pack Qty |
|----------------|-------------|-------------------|---------------|----------|
| 4 x 20 | | 4686-712 * | 45.68 | 25 |
| 4 x 25 | | 4686-713 * | 45.68 | 25 |
| 4 x 32 | | 4686-714 * | 45.68 | 25 |
| 4 x 40 | | 4686-715 * | 45.68 | 25 |
| 4 x 50 | | 4686-716 * | 45.68 | 25 |
| 4 x 63 | | 4686-717 * | 45.68 | 25 |
| 6 x 75 | | 4686-719 * | 61.79 | 25 |
| 6 x 90 | | 4686-720 * | 61.79 | 25 |
| 6 x 110 | | 4686-721 * | 61.79 | 25 |
| 6 x 20 | Twin | 4686-812 * | 149.10 | 5 |
| 6 x 25 | Twin | 4686-814 * | 149.10 | 5 |
| 6 x 32 | Twin | 4686-816 * | 149.10 | 5 |

Contain-It Accessories



Fitting Clip

| Size [inch] | Part No. | USD | Pack Qty |
|-------------|------------|------|----------|
| 3, 4 & 6 | 4693-101 * | 0.61 | 25 |



Pipe Clamp

| Size [inch] | Part No. | USD |
|-------------|------------|--------|
| 4 & 6 | 4693-102 * | 544.03 |



Drill Bits

| Size [inch] | Part No. | USD |
|-------------|------------|--------|
| 3 & 4 | 4693-104 * | 67.10 |
| 6 | 4693-106 * | 134.19 |



Test Gauge

Do Not Exceed 5 PSI Air Pressure

| Size [inch] | Part No. | USD |
|-------------|------------|-------|
| 3, 4 & 6 | 4693-150 * | 69.02 |



Manual Injection Gun - System II

Mixing Tips not included

| d [inch] | Part No. | USD |
|----------|------------|--------|
| 3, 4 & 6 | 4694-200 * | 610.64 |



Pneumatic Injection Gun - System II

Mixing Tips not included

| d [inch] | Part No. | USD |
|----------|------------|----------|
| 3, 4 & 6 | 4694-201 * | 1,677.58 |



Adhesive Cartridge - System II

Limited Shelf Life of 18 Months
 Mixing Tips not included

| d [inch] | Part No. | USD | Pack Qty |
|-------------|-------------------|--------------|----------|
| 3, 4 & 6 | 4694-302 * | 80.60 | 4 |



Mixing Tips - System II

| Description | Part No. | USD | Pack Qty |
|-------------|-------------------|--------------|----------|
| Straight | 4694-303 * | 7.73 | 10 |
| Bent | 4694-307 * | 20.82 | 10 |
| Flexible | 4694-306 * | 36.27 | 10 |

Leak Detection



Low Point Leak Detection Alarm Box

A

- Visual alarm indicators
- Powered on lithium batteries
- Alarm box does not include sensors
- No output option

| | Part No. | USD | Description |
|---|-------------|----------|--|
| * | 150 240 001 | 1,529.00 | 4 Sensor Signal Leak Detection Alarm Box |



Low Point Leak Detection System

- 12 point leak detection system
- 14" x 12" NEMA 4 Enclosure with locking latches.
- Internal fusible breaker for power protection.
- (12) Red LED indicators for leak detection at a specific points.
- RS485 Communications for building automation.
- Alarm output terminals for remote alarm indication.
- Optional audible alarm available.
- Other options available upon request.

| | Part No. | USD | Description |
|---|-------------|------|--------------------------------|
| * | 150 000 060 | Call | 12 Point Leak Detection System |

Continuous Cable Leak Detection System



- Dimensions: 13.75" x 11.81" x 4.00" (350mm x 300mm x 102mm) Type 12 (IP52)
- Power: 110-240VAC, 50/60 Hz, 0.3 A/50 VA 24 VDC, 1 A/24 VA
- Accepts probe and cable sensors in one sensor string

| | Maximum Cable Range [ft] | Cable Capacity | Part No. | USD |
|---|--------------------------|----------------|-------------|------|
| * | 3000 | 1 | 150 000 061 | Call |
| * | 7500 | 1 | 150 000 064 | Call |
| * | 7500 | 4 | 150 000 065 | Call |

Level Switch

A



| | Part No. | USD | Size | Material |
|---|-------------|-------|-----------------|---------------|
| * | 150 000 062 | 48.00 | 1/2" x 1/2" NPT | Polypropylene |
| * | 150 000 063 | 79.00 | 1/2" x 1/2" NPT | CPVC |

Adhesive Requirements

| Contain-It™ Cartridge | Fittings/Pipe | # of Sockets/Tube |
|-----------------------|---------------|---------------------------|
| 1 cartridge | 4" fittings | 14 |
| 1 cartridge | 6" fittings | 10 |
| 1 cartridge | 4" pipe | 20 ft. length, both sides |
| 1 cartridge | 6" pipe | 10 ft. length, both sides |

Adhesive Cartridge Requirements Calculation

This table is designed to assist in the accurate determination of the number of adhesive cartridges required for a specific project. All 3" pipe and fittings take 15% less adhesive than 4".

Fittings

Quantity of 4" Tees and Wyes _____ × 3 = _____

Quantity of 4" Fittings
(other than tees and wyes) _____ × 2 = _____

_____ /14 = _____

Quantity of 6" Tees and Wyes _____ × 3 = _____

Quantity of 6" Fittings
(other than tees and wyes) _____ × 2 = _____

_____ /10 = (+) _____

Split Pipe

_____ Feet 4" Split Pipe/20 (1 cartridge will fill 20 ft., both sides) = (+) _____

_____ Feet 6" Split Pipe/10 (1 cartridge will fill 10 ft., both sides) = (+) _____

TOTAL CARTRIDGES _____