

Perma-Gard® - PVC Shower Pan Liner

- Perma-Gard is a flexible polyvinyl chloride (PVC) sheet liner. Color is grey. Perma-Gard is continuously marked on the roll and lined every 6 inches.
- Perma-Gard PVC shower pan liner will not rust, rot, or decay under normal and recommended conditions for the life of the installations. Perma-Gard is not recommended for continuous exposure to the sun environment.
- No underlayment required when using 40 mil.
- Meets FHA and HUD requirements for shower pans and ASTM D- 4551 Requirements
- Not compatible with tar based products or tar paper felt.

Test Specification: ASTM D-4551

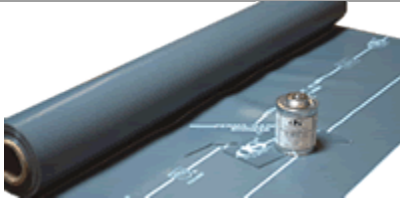
Property:	Test Results	Test Method
Thickness	40 mil. 0.040	ASTM D-374
(Tensile Strength lbs./in.)	40 mil. 108 lbs. (2700 PSI)	ASTM D-412
Elongation	40 mil. 13.3 lbs. (400% +)	ASTM D-1004
Pinholes	40 mil. Zero (passed)	ASTM D4551-11-3
Resistance	40 mil. No Growth	ASTM D4551-A1
Hydrostatic Pressure	40 mil. No Rupture	ASTM D4551-A2
Indentation Resistance	40 mil. No Leakage	ASTM D4551-A5
Folding Resistance	40 mil. No Rupture	ASTM D4551-A3
Chemical Resistance	40 mil. No Rupture	ASTM D4551-A4
Alkali Resistance	40 mil. Passed	ASTM D4551-A4
Shrinkage	40 mil. No Leaks	
Volatiles Loss	40 mil. Passed + 5%	ASTM D-1204
	40 mil. Passed	ASTM D-1203

Code Listings

Tested to ASTM D-4551/Complies



40 mil PVC Perma-Gard Shower Pan Liner



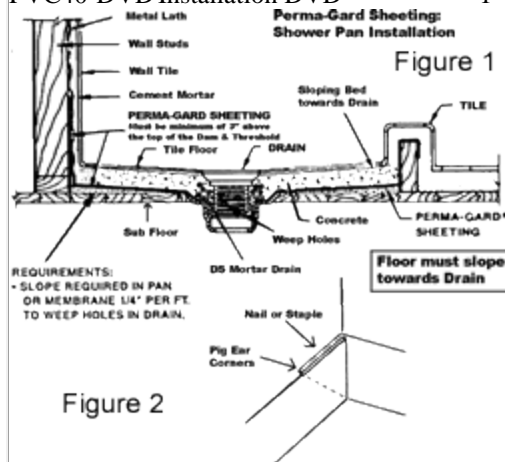
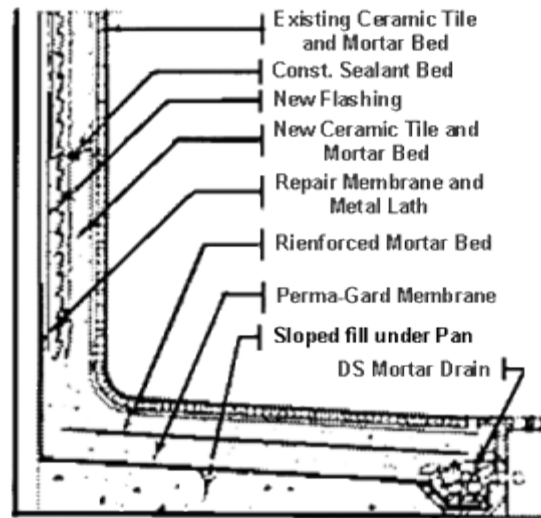
Part No.	Size (width x linear)	Sq. Feet/Roll
PVC40-450	4' x 50'	200'/roll
PVC40-4100	4' x 100'	400'/roll
PVC40-540	5' x 40'	200'/roll
PVC40-5100	5' x 100'	500'/roll
PVC40-580	5 x 80"	400'/roll
PVC40-650	6' x 50'	300'/roll
PVC40-6100	6' x 100'	600'/roll

Shower Pan Liner Accessories



Part No.	Description	Case Qty.
249	Bonding Fluid (cement for Perma-Gard)	12 /case
PVC-C	Preformed Corners(outside)	Bulk
PVC40-DVD	Installation DVD	1

Tile Shower Renovation Instructions

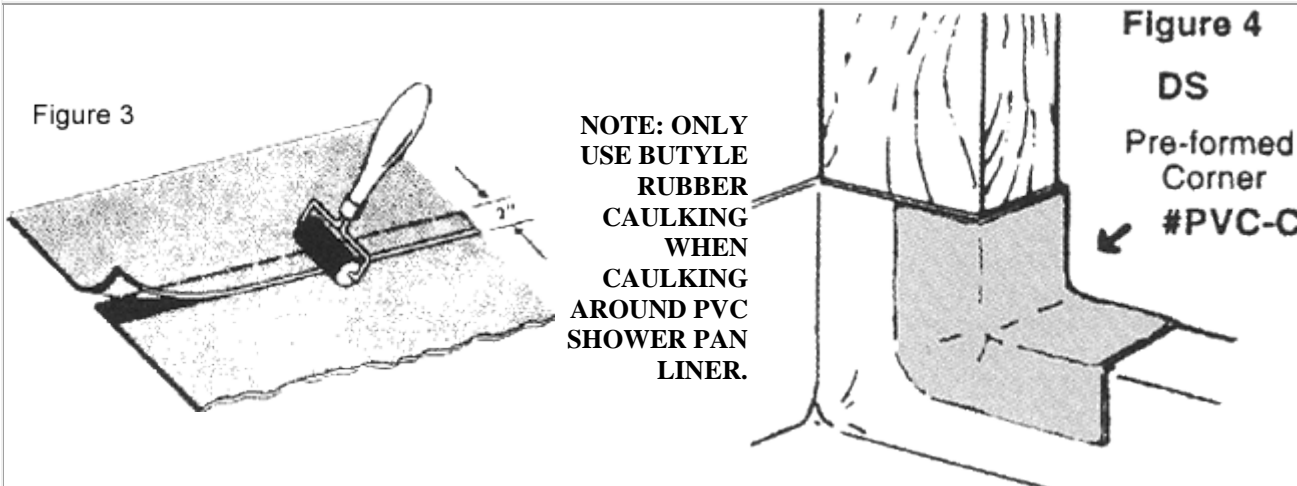


Recommended Uses: Over wood or concrete subfloors, where old shower-pan has failed.

Requirements:

- Remove existing shower receptor, water-proof membrane and wall tile as required to install new waterproof membrane.
- Replace any damaged wall or floor substrate materials.
- Slope required in new membrane 1/4" per foot to weep holes in drain.
- New membrane to turn up wall at least 3" above shower curb.
- Use Dallas Specialty Mortar Drain over weep holes.

Application Instructions for PVC Shower Pan Liner and Safe Pan Membranes



Installation

- Sweep the floor broom-clean. Make certain all sharp objects are removed and nails in sub-flooring are firmly driven flush. The sub-floor must be smooth, free of holes, cracks, splinters or sharp projections.
- If the wood sub-floor is uneven, place one or two layers of 15 pound felt (dry) over it to provide a smooth base for the **Perma-Gard** Sheeting (not needed over smooth plywood or concrete w/40 mil. UPC requires a 15# Roofing Felt underlayment in all situations with 30 mil. **WARNING: DO NOT USE TAR PAPERS.**
- Line the shower floor or pan with **Perma-Gard** sheeting brand plastic waterproofing membrane. Turn the sheet up all side walls at least 6" above finished floor level.
(see **Figure 1**)
- Fold corners (do not cut) against the upstand by making a pig ear fold. Nail or staple 1/2 inch from the upper edge to hold it in place.
(see **Figure 2**) Where metal stubs or framing are used, duct tape may be used to secure.
- Where no backing is provided between the studs, the slack may be taken up by pleating and stapling or nailing to the studding 1/2" from the upper edge.
- To adhere **Perma-Gard** sheeting to vertical surfaces, coat the back of the sheet and the surface to which it will be applied with adhesive. Allow the adhesive to become dry to the touch (5-10 minutes) and press the sheet into place.

Welding DS

Bonding Fluid provides a fast, effective weld which is permanently waterproof for larger areas. A properly made joint is effective in 12 hours, although maximum strength takes 24 hours to develop.

- Surfaces must be clean
- Overlap a minimum of 2" and press surfaces firmly together. For long joints 2 to 3 of joint can be made at one time; peel back into previous portion slightly when using DS Bonding Fluid on the next section to assure continuity of joint. (see **Figure 3**) Apply Bonding Fluid to both surfaces to be joined. Allow the fluid to set 60 seconds prior to mating the surfaces. It is imperative that the pan be water tested for at least 24 hours to make sure that there are no leaks.
- Always use pressure to complete solvent joints.
- Lap joints in direction of watershed.
- Provide adequate ventilation when working with DS Bonding Fluid.

Drain Installation

- a) Press the **Perma-Gard** Sheeting into position on the drain body, cut and fit where required. It is necessary to bond the pan liner to top of drain body with DS Bonding Fluid or Silicone.
- b) Recommended – When installing PVC **Perma-Gard** to a PVC drain body you should weld the pan to the body using DS Bonding Fluid. Use Silicone with metal or plastic drains.
- c) Where the drain has a clamping ring that is bolted down, no wrinkling will occur. Where the clamping ring is threaded, the material may be lubricated to prevent wrinkling. A slight wrinkling will not affect the seal and will flatten out when the mortar is poured on to make base.
- d) If the drain has flutes on the underside, the clamping ring should be reversed so that the flat surface is sealing with **Perma-Gard**.
- e) Because **Perma-Gard** Sheeting brand plastic waterproofing membrane is not susceptible to electrolytic attack, it is not necessary to apply any protective coating (such as asphaltum) to the shower pan.
- f) Use Mortar Drain over weep holes.

Dam Corner Installation

- a) Cut along the studs at the opening and lay the **Perma-Gard** Sheeting over the dam, Fasten along the front of dam outside the shower pan.
- b) Use two DS pre-formed corners. (see [Figure 4](#)) Clean one side of each pre-formed corner thoroughly.
- c) Apply DS Bonding Fluid to surfaces to be bonded. Press the corner into place forming with hand pressure.
- d) Trim the excess material outside the shower to cut, fold over and fasten to the outside surface. (see [Figure 4](#))

LIMITED WARRANTY

As the use of this product is beyond the control of the seller, liability of the sellers shall be limited to replacement of product. Dallas Specialty warrants that their products are manufactured free of defects in material and workmanship. The limit of Dallas Specialty liability for failure of any of the products to meet foregoing warrants or for any breach of any other warranty, express, implied or statutory shall be to supply an equivalent amount of products returned to it and found by Dallas Specialty to be defective. DUE TO THE WIDELY VARYING CONDITIONS UNDER WHICH OUR PRODUCTS ARE USED OR INSTALLED, DALLAS SPECIALITY OFFERS NO WARRANTY AS TO THE LENGTH OR SERVICE SUITABILITY FOR ANY PARTICULAR PURPOSE OF THE PRODUCTS. IN NO EVENT SHALL DALLAS SPECIALTY BE LIABLE FOR INCIDENTAL OR CONSEQUENTIAL DAMAGES OR INJURY. Any action for breach of warranty must be brought within 30 days of delivery. DALLAS SPECIALTY retains the right to make changes or improvements from time to time in the products.