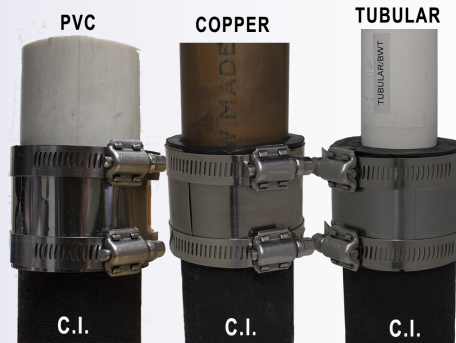


# Specialty Transition Couplings



## Dallas Specialty's Specialty Transition Couplings:

- Used for joining a variety of pipes and sizing situations
- Resists shear conditions while maintaining alignment.
- Easy assembly, disassembly and reusable.
- Creating a long lasting joint installation.

## DSCCKX, DSCPX & DSTX Series Specifications

For above ground installation where Cast Iron, XH Cast Iron, Plastic, Steel and Copper pipes are used.



300SS Adjustable Band

### Gasket

- Neoprene Rubber
- ASTM C-564 / C-1460
- Meeting material requirements of: IPC/IRC
- Meets CISPI 310
- UPC listed

### Clamp & Shield

- 300 Series Stainless Steel
- 5/16" Hex Head Screw
- 60# Torque
- Heavy Duty Shield .012 Stainless Steel

DSCCKX SERIES (CAST IRON x COPPER)	
Part No.	Description
DSCCKX1125D	1-1/2" CI x 1-1/4" COPPER
DSCCKX115	1-1/2" CI x 1-1/2" COPPER
DSCCKX2125D	2" CI x 1-1/4" COPPER
DSCCKX215	2" CI x 1-1/2" COPPER
DSCCKX22	2" CI x 2" COPPER
DSCCKX32D	3" CI x 2" COPPER
DSCCKX33	3" CI x 3" COPPER
DSCCKX43D	4" CI x 3" COPPER
DSCCKX44	4" CI x 4" COPPER
DSTX SERIES (CAST IRON/PVC x TUBULAR)	
DSTX150	1-1/2" CI/PVC x 1-1/2" TUBULAR
DSTX215	2" CI/PVC x 1-1/2" TUBULAR



DSCPX SERIES (C.I. x PVC, STEEL or XH C.I.)	
Part No.	Description
DSCPX150	1-1/2" CI x 1-1/2" PL, ST or XHCI
DSCPX200	2" CI x 2" PL, ST or XHCI
DSCPX215	2" CI x 1-1/2" PL, ST or XHCI
DSCPX32	3" CI x 2" PL, ST or XHCI
DSCPX33	3" CI x 3" PL, ST or XHCI
DSCPX43	4" CI x 3" PL, ST or XHCI
DSCPX44	4" CI x 4" PL, ST or XHCI
DSCPX55	5" CI x 5" PL, ST or XHCI
DSCPX66	6" CI x 6" PL, ST or XHCI
DSCPX88	8" CI x 8" PL, ST or XHCI



**DALLAS SPECIALTY & MFG. CO.**

1161 RUGGLES ST GRAND PRAIRIE, TX 75050

972-641-8444 \* 1-800-222-5644 \* fax 972-641-8488

[www.dallasspecialty.com](http://www.dallasspecialty.com)